



2024/25

PROSPECTUS

BOTHU UNIVERSITY

BOS ISO 9001:2015 Certified Organisation
www.bothouniversity.com

MY CAREER GROWTH PASSPORT



*My journey to
becoming the best
version of me!*

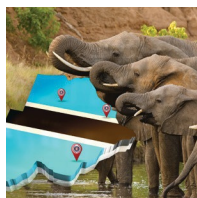


an initiative of
**STUDENT & ALUMNI
AFFAIRS DEPARTMENT**



BOTHO
UNIVERSITY
VIBRANCE • INNOVATION • IMPACT

TABLE OF CONTENTS



About Us	4
.....	
Our Infrastructure	7
.....	
Our Programmes	8



Faculty of Business And Accounting	11
.....	
Faculty of Engineering And Technology	23
.....	
Faculty of Health And Education	32
.....	
Faculty of Hospitality And Sustainable Tourism	38

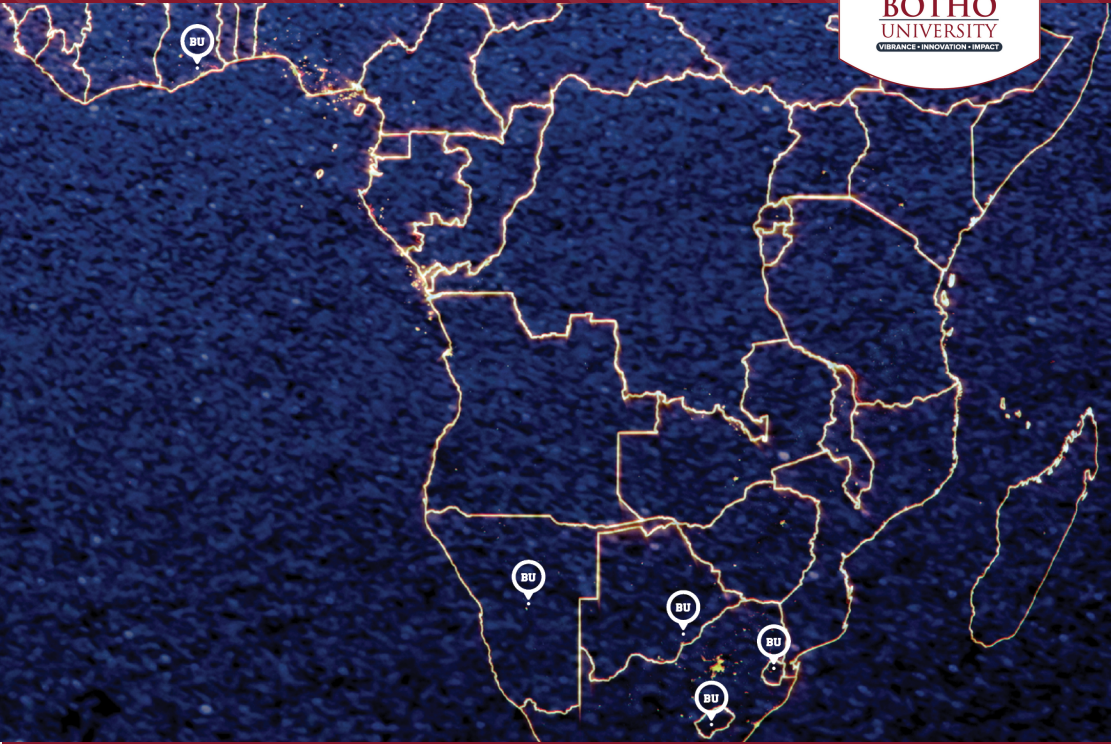
F
A
C
U
L
T
I
E
S



General Admissions Information	42
.....	
Blended and Distance Learning Campus	44
.....	
International Students	45
.....	
Employability and Our Graduates	47
.....	
Botho Testing Centre	49
.....	
Quality & Accolades	50
.....	



ABOUT US



Botho University (BU) was established in 1997 and has rapidly evolved over the years to become a leading multi-disciplinary high-quality tertiary education provider. Botho University was one of the first local tertiary institutions in Botswana to be accredited by the then Tertiary Education Council (TEC). All programmes offered by Botho University are approved by regulatory bodies where we operate. BU currently offers programmes through four faculties namely Faculty of Business & Accounting, Faculty of Engineering and Technology, Faculty of Health and Education and Faculty of Hospitality and Sustainable Tourism. BU strategy is focused on building strong, industry-focused Science, Technology, Engineering and Mathematics (STEM) programmes, which are critical to economic growth in Africa. Additionally, the new 2023 - 2027 strategy's key principles are Vibrance, Innovation and Impact which are supported by the university Sustainability and Social Impact Report 2022.

BU currently offers qualifications from certificate to master's degree levels with established plans for doctoral programmes in the foreseeable future. The University, with over 3500 students and nearly 350 staff members and great opportunity for further expansion and growth, is a dynamic and exciting place to be. Botho University is one of the few Southern African institutions to have established international campuses successfully operating outside Botswana, producing all rounded and globally employable graduates.

BU programmes are offered through an online Distance Learning Campus as well as physical campuses located in Botswana, Lesotho, Namibia, Eswatini and Ghana. For the latest information on the university programmes kindly refer to specific campus prospectus for details or visit www.bothouniversity.com.

THE LEARNING MANAGEMENT SYSTEMS

As a modern university, Botho University prides

ABOUT US (Continued)



itself on being a technology driven institution from inception. The COVID 19 pandemic in 2020 helped BU to demonstrate its strength when teaching and learning migrated from classroom teaching and learning to online learning with ease. The Faculty and students from various campuses were able to adapt easily when the university fully moved from “non-contact” teaching to online learning. During the COVID-19 pandemic, Botho University deployed high- end technology to ensure that learning and teaching continued in spite of the restrictions that posed a threat to many educational institutions dependent on teaching and learning taking place on physical campuses.

Botho University has invested in a robust state-of-the-art mobile learning and e-Learning infrastructure called Blackboard that has been the backbone of online learning for both classroom and blended and distance learning. All Botho University students and staff use Blackboard Learn and its mobile application to enhance teaching and learning.

Blackboard Learn is a Virtual Learning Environment (VLE) that supports teaching and learning by allowing students to access course materials online. Blackboard App and Blackboard Instructor App are the mobile versions of Blackboard, which students can access through the use of smartphones or tablets. Blackboard has a plethora of features and functionality that provides an unparalleled level of student engagement, such as discussion forums, wikis, blogs, and journals, as well as advanced content management features that allow for textual, audio, visual, and pictorial content. In addition, Blackboard provides powerful assessment features that allow plagiarism check as well as comprehensive reporting and analytics for easy identification of “at-risk” students.

Apart from Blackboard, BU also has an industry leading anti-plagiarism check tool called “Turnitin” making its assessment activities stringent and of international quality. Through the Blackboard students and staff have easy and

full access to e-Library facilities. The University E-Library has the following Databases: Emerald, Ebscohost, Proquest, Dawsonera, Jstor and BU Repository, for access to all the E-Books, E-Journals, theses, dissertations, case studies and many more resources.

CORPORATE TRAINING DEPARTMENT

Since 1997, Botho University has been offering a diverse range of programmes for in-service professionals and organisations. Under the Corporate Training Department, there are over 200 short-term professional development programmes, which can be customized to meet the client’s requirements. The department in liaison with the faculty develops professional development programmes to improve productivity, performance, and profitability.

FUTURE PLANS

Botho University’s strategic focus is to increase student diversity by attracting international students. Apart from Botswana, Lesotho, Namibia and Eswatini, BU campuses (including physical and distance learning campus) attract several students across Africa. BU’s diverse community includes students from South Africa, Namibia, Zimbabwe, Zambia, Democratic Republic of Congo and Ethiopia to name a few.

BOTHO’S PARTNERSHIPS

Botho University has partnerships with world renowned institutions in Africa, India, Europe and America. These partnerships are strategic and are meant to expose both staff and students to international experiences. This is done through exchange programmes, research and teaching and learning collaborations.

OUR QUALITY

Botho University is driven by the core values of integrity, excellence, and inclusiveness and

ABOUT US (Continued)



aims to produce well-rounded, entrepreneurial, and globally employable graduates with the attitude, knowledge, skills, and competencies to create value and drive productivity increases needed to catalyse sustainable economic growth. The focus on quality has resulted in Botho University becoming a BOS ISO 9001:2015 certified institution. With an impeccable reputation for quality in the market, Botho University graduates are leading the way in transforming the economy.

THE BLENDED AND DISTANCE LEARNING CAMPUS

The Blended and Distance Learning Campus (BDLC), which started operating in 2017 is driven by high levels of integrity, excellence, and inclusiveness, which are also the core values of the institution. These values are coupled with state of the art teaching infrastructure, qualified staff, and accredited industry specific programmes offering the learner skills to be employable, entrepreneurial, and well rounded. BDLC offers undergraduate and postgraduate cross-disciplinary programmes that are unique and designed to suit the current and future job market.

LESOTHO CAMPUS

Botho University opened its state-of-the-art campus in Maseru Mall in 2015, with plans to build and open a campus by 2024. BU Lesotho Campus is fully compliant with the Council on

Higher Education's regulatory requirements.

BU Maseru offers degree programmes through three faculties of Business & Accounting, Health and Education and Engineering & Technology.

NAMIBIA CAMPUS

Botho University, Namibia opened doors to students in August 2018 after duly getting registered with NCHE offering 100% scholarships to the students of Namibia. BU Namibia is now officially recognized by the Namibian Qualifications Authority (NQA) and admits students eligible for NSFAF scholarship and self-sponsored students.

BU Namibia offers degree programmes in the Faculty of Business & Accounting, Faculty of Health and Education and Faculty of Engineering & Technology.

ESWATINI CAMPUS

Botho University established a campus in Eswatini in 2018 and is in full operation as per the ESHEC regulatory requirements. The government will start to sponsor students to BU Eswatini from 2023.

BU Eswatini offers programmes from the Faculties of Computing, Health & Education and Business & Accounting.

GHANA CAMPUS

The Ghana Campus, established in 2022 is the first BU campus in West Africa.

Botho University Ghana aspires to be an integral player in establishing an economically diversified, fast growing, and prosperous Ghana built on integrity, excellence, inclusiveness, and financial viability.

The programmes currently under accreditation are in the key fields of Accounting, Business, Computing and Health.

OUR INFRASTRUCTURE



Our Gaborone Campus



Sports Facilities



Mini Soccer Turf



Graduation Ceremony at Otse Multi-Purpose Hall, Gaborone



Botho Higher Education Institution in Namibia



Our Lesotho Campus



Our Labs



Library



Our Eswatini Campus



Fully Equipped Jewellery Labs



Computer Labs



Entertainment at BU Multipurpose Hall



Traditional Dance at BU Multipurpose Hall



Engineering Lab

OUR PROGRAMMES

FACULTY OF BUSINESS & ACCOUNTING	
PROGRAMME CODE	MASTERS PROGRAMMES
MCO-9MA-22 MBA-9MA-17 MCB-9MA-23	<u>Business</u> Master of Commerce in Human Resource Management Master of Business Administration Master of Commerce in Banking
PROGRAMME CODE	BACHELORS PROGRAMMES
FIN - 7BO - 21 BCO - 7BO - 20 BRM - 7BO - 20 INB - 7BO - 21 BBA-7BM-21 SCM-7BO-23-BW	<u>Accounting</u> Bachelor of Commerce in Finance Bachelor of Commerce in Accounting Bachelor of Commerce in Risk Management Bachelor of Commerce in Investment & Banking Bachelor of Business Administration in Business Management Bachelor of Commerce in Supply Chain Management

*The information/criteria in this prospectus was updated at the time of going for print. For all latest updates, please do refer to our website or talk to our admissions department.

*The programmes offered in this document are accredited by BQA at the time of print. Please refer to your offer letter from the admissions department for any changes in programme name or duration that may occur due to regulatory requirements.

*Check our website for the latest updates on Campus Learning programmes and Distance Learning programmes by visiting www.bothouniversity.com

OUR PROGRAMMES

(Continued)



FACULTY OF ENGINEERING AND TECHNOLOGY	
PROGRAMME CODE	MASTERS PROGRAMMES
ISM - 9MA - 22	Master of Science in Information Systems Management
PROGRAMME CODE	BACHELORS PROGRAMMES
DSC - 7BO-22	Bachelor of Science in Data Science
CSM-7BO-23	Bachelor of Science in Cybersecurity and Risk Management
EEN - 8BO-23-BW	Bachelor of Engineering in Electrical Engineering
NCF - 8BH - 19	Bachelor of Science in Network Security and Computer Forensics

*The information/criteria in this prospectus was updated at the time of going for print. For all latest updates, please do refer to our website or talk to our admissions department.

*The programmes offered in this document are accredited by BQA at the time of print. Please refer to your offer letter from the admissions department for any changes in programme name or duration that may occur due to regulatory requirements.

*Check our website for the latest updates on Campus Learning programmes and Distance Learning programmes by visiting www.bothoiversity.com

OUR PROGRAMMES

(Continued)

FACULTY OF HEALTH AND EDUCATION	
PROGRAMME CODE	MASTERS PROGRAMMES
MED-9MA-21 MEC-9MA-22 MEL-9MA-23	Master of Education in Higher Education Master of Education in Curriculum Design & Instruction Master of Education in Educational Leadership and Management
PROGRAMME CODE	POST GRADUATE DIPLOMA PROGRAMMES
HED-8PD-15 PET-8PD-23	Post Graduate Diploma in Higher Education Post Graduate Diploma in Educational Technology
PROGRAMME CODE	BACHELORS PROGRAMMES
HIM-8BO23 SHE-8BO-23 BHI-7BO-23-BW HPA-7BO-23-BW	Bachelor of Science in Health Information Management Bachelor of Science in Safety, Health & Environmental Management Bachelor of Science in Health Informatics Bachelor of Science in Hospital Administration
PROGRAMME CODE	DIPLOMA PROGRAMMES
OHS-6DI-21	Diploma in Occupational Health & Safety

FACULTY OF HOSPITALITY AND SUSTAINABLE TOURISM	
PROGRAMME CODE	BACHELORS PROGRAMMES
HMA-8BO-22	Bachelor of Commerce in Hospitality Management

*The information/criteria in this prospectus was updated at the time of going for print. For all latest updates, please do refer to our website or talk to our admissions department.

*The programmes offered in this document are accredited by BQA at the time of print. Please refer to your offer letter from the admissions department for any changes in programme name or duration that may occur due to regulatory requirements.

*Check our website for the latest updates on Campus Learning programmes and Distance Learning programmes by visiting www.bothouniversity.com

Master of Business Administration (MBA)

Programme details:

The programme consists of 11 core (required) modules and 8 Elective Modules. The Research Methodology is a pre-requisite for the Dissertation in the MBA Programme. Some modules may be co-requisite (i.e. such modules are required to be taken together). The number at the end of the module in parenthesis indicates the credit load of the module. 1 credit is equal to 10 hours of learning (guided, in-class and independent combined); therefore a 10-credit module requires on average 100 hours of learning from the student. The MBA Programme will be Block Release and Distance Learning.

Core modules:

- A9 - MAC - 17: Management Accounting (20)
- A9 - FMT - 17: Financial Management (20)
- B9 - CBS - 17: Collaborative Business Strategies (10)
- B9-MIS-17: Management Information Systems (20)
- B9 - PMT - 17: Project Management (10)
- B9 - MEC - 17: Managerial Economics (10)
- B9 - MGT - 17: Marketing Management (20)
- B9 - DAS - 17: Decision Analysis (10)
- B9 - STM - 17: Strategic Management (20)
- B9 - BRM - 17: Business Research Methods (20)
- B9-DIS-17: Dissertation (60)

Elective Modules:

- A9 - IIA - 17: International Investment Analysis (10)
- A9 - RMF - 17: Risk Management in Financial Institutions (10)
- A9 - FTM - 17: Financial Markets and Treasury Management (10)
- B9-STM-17: Strategic Marketing (10)
- B9-NPD-17: New Product Development and Management (10)
- B9-OPS-17: Operations Strategy (10)
- B9-TPN-17: Technopreneurship (10)
- B9-BST-17: Business Statistics (10)

Recommended full-time study path: 2 Years

Semester 1

- B9 - CBS - 17, B9 - MIS - 17, A9 - MAC - 17, B9-PMT-17

Semester 2

- B9 - MEC - 17, B9 - MGT - 17, A9 - FMT - 17, B9 - DAS - 17

Semester 3

- B9 - STM - 17, B9 - BRM - 17 **Select two** (A9-IIA-17, A9 - RMF - 17, A9 - FTM - 17, B9-SMG-17, B9-NPD-17, B9-OPS-17, B9-TPN-17, B9-BST-17)

Semester 4

- B9 - DIS - 17

Admissions Criteria

1) Applicants are expected to have completed any Bachelor's Degree, preferably from a recognised institution with requisite Leadership skills.

2) For enquiries and more information please visit our website: www.bothouniversity.com

Master of Commerce in Human Resource Management

Programme Details:

The Master of Commerce in Human Resource Management facilitates the Professional and Corporate development of Business Leaders and Aspiring Business Managers. The programme builds competence in human development, human resource planning, knowledge of social and political contexts of developments, integration of theory into practice and research. The programme achieves this by developing Graduates with Knowledge, Skills and Competencies to take on leadership roles in a range of settings to achieve effective human resource development priorities of emerging economies. The Programme is beneficial in assisting the adoption and implementation of an integrated approach to help build capacity to respond to human and social development most especially in emerging markets as well as help facilitate networks and partnerships.

Core Modules:

- B9-HRM-22: Human Resource Management (20)
- B9-TRD-22: Training and Development (20)
- B9-HRP-22: Human Resource Planning and Development (20)
- B9-SRM-22: Strategic Human Resource Management (20)
- B9-PRM-22: Performance and Reward Management (20)
- B9-ELR-22: Employment Law and Employee Relations (20)
- B9-CEP-22: Contemporary Issues in work employment and People Management (10)
- B9-CHM-22: Change Management (10)
- B9-CCM-22: Cross Cultural Management (10)
- B9-BRM-17: Business Research Methods (20)
- B9-DIS-17: Dissertation (60)
- Elective Modules:
- B9-MED-22: Managing Equality and Diversity (10)
- B9-CCW-22: Counselling and Coaching at the Workplace (10)

- B9-MSH-22: Management of Safety and Health (10)
- B9-MNO-22: Managing Organisations (10)

Recommended full-time study path: 2 Years

Semester 1

- B9-HRM-22, B9-TRD-22, B9-HRP-22

Semester 2

- B9-SRM-22, B9-PRM-22, B9-ELR-22

Semester 3

- B9-CEP-22, B9-CHM-22, B9-CCM-22; B9-BRM-17 **Select one** (B9-MED-22; B9-CCW-22, B9-MSH-22, B9-MNO-22)

Semester 4

- B9-DIS-17

Admissions Criteria

1) Applicants are expected to have completed any Business Related Degree, preferably from a recognised institution.

2) For enquiries and more information please visit our [website:www.bothouniversity.com](http://www.bothouniversity.com)

Master of Commerce in Banking

Programme Details:

Master of Commerce in Banking is a postgraduate master's degree focusing on commerce-, accounting-, management-and economics related subjects. It is best suited for applicants, who desire to pursue a career in Banking, Accounting, Financial and Investment sectors. Students should have knowledge of economics and business in order to pursue this programme.

Core Modules:

- B9-BOS-23: Bank Operations Strategy (20)
- A9-BFM-23: Bank Financial Risk Management (20)
- A9-CFA-23: Corporate Finance and Financial Statement Analysis (10)
- A9-PJF-23: Project Finance (10)
- B9-PIB-23: Portfolio Theory and Investment Banking (10)
- A9-FRC-23: Financial Services Regulation and Compliance (20)
- B9-RIM-23: Responsible Investment (10)
- A9-QMF-23: Quantitative Methods in Development Finance (10)
- A9-MEF-23: Micro Enterprise Finance (10)
- B9-BLP-23: Banking Law and Practice (10)
- A9-FEM-23: Foreign Exchange Management (10)
- B9-CBM-23: Commercial Bank Management (10)
- B9-BRM-17: Business Research Methods (20)
- B9-DIS-17: Dissertation (60)

- B9-MSH-22: Management of Safety and Health (10)
- B9-MNO-22: Managing Organisations (10)

Recommended full-time study path: 2 Years

Semester 1

- B9-HRM-22, B9-TRD-22, B9-HRP-22

Semester 2

- B9-SRM-22, B9-PRM-22, B9-ELR-22

Semester 3

- B9-CEP-22, B9-CHM-22, B9-CCM-22; B9-BRM-17 **Select one** (B9-MED-22; B9-CCW-22, B9-MSH-22, B9-MNO-22)

Semester 4

- B9-DIS-17

Admissions Criteria

1) Applicants are expected to have completed any Business Related Degree, preferably from a recognised institution.

2) For enquiries and more information please visit our [website:www.bothouniversity.com](http://www.bothouniversity.com)

Bachelor of Commerce in Finance

Programme Details:

The programme consists of core (required) and elective modules. Some modules may have pre-requisites (i.e. may require the students to pass another module or set of modules first). The number at the end of the module in parenthesis indicates the credit load of the module. One credit is equal to 10 hours of learning (guided in class and independent combined); therefore 10-credit module requires on average 100 hours of learning from the students.

Core Modules:

- C5-IMO-20: Introduction to MS Office (10)
- D5-AWB-20: Academic Writing for Business (10)
- B5-BS1-17: Business Mathematics & Statistics 1 (10)
- B5-LAB-20: Legal Aspects of Business (10)
- B5-BM1-20: Business Management 1 (10)
- A5-FFI-21: Fundamentals of Finance (10)
- B5-PMK-20: Principles of Marketing (10)
- B5-BS2-17: Business Mathematics & Statistics 2 (10)
- A5-PA1-14: Principles of Accounting 1 (20)
- A5-FMT-15: Financial Markets (20)
- A6-PA2-17: Principle of Accounting 2 (10)
- A6-CDA-17: Computerised Accounting (20)
- A6-TAX-20: Taxation (10)
- B5-MIE-17: Microeconomics (10)
- A6-COA-20: Cost Accounting (10)
- B6-MAE-17: Macroeconomics (10)
- A6-CFM-21: Corporate Financial Management (10)
- A6-FIA-21: Fixed Income Analysis (10)
- A6-FAN-21: Financial Analytics (20)
- A6-RMI-20: Risk Management and Insurance (10)
- A7-MAC-17: Management Accounting (20)
- A7-EIM-21: Equity and Investment Management (10)
- A7-PFD-21: Public Finance and Debt Management (10)
- A7-FR1-17: Financial Reporting 1 (20)
- A7-COL-20: Company Law (20)

- B7-RMB-20: Research Methods in Business (10)
- A7-APT-21: Asset Pricing Theory and Practice (10)
- A7-FIM-20: Financial Modelling (10)
- A7-RP1-20: Research Project 1: Proposal (10)
- A7-PPR-21: Professional Practice (40)
- A7-RP2-20: Research Project 2: Dissertation (20)
- B7-CGV-20: Corporate Governance (10)
- A7-INF-20: International Finance (10)

Elective Modules:

- A7-VCF-21: Venture Capital Finance (10)
- A7-ISF-21: Islamic Finance (10)
- A7-FIS-21: Financial Strategy (10)
- A7-FIE-21: Financial Engineering (10)
- A7-REI-21: Real Estate Investment and Finance (10)
- A7-FR2-17: Financial Reporting 2 (10)
- B8-ENI-20: Entrepreneurship and Innovation (20)
- B8-SOE-21: Social Entrepreneurship (20)
- E8-ISD-18: Innovation for Sustainable Development (20)

Recommended Full-Time Study Path (4 years)

Semester 1

- C5-IMO-20, D5-AWB-20, B5-BS1-17, B5-LAB-20, B5-BM1-20, A5-FFI-21

Semester 2

- B5-PMK-20, B5-BS2-17, A5-PA1-14, A5-FMT-15

Semester 3

- A6-PA2-17, A6-CDA-17, A6-TAX-20, B5-MIE-17, A6-COA-20

Semester 4

- B6-MAE-17, A6-CFM-21, A6-FIA-21, A6-FAN-21, A6-RMI-20

Semester 5

- A7-MAC-17, A7-EIM-21, A7-PFD-21, A7-FR1-17

Semester 6

- A7-COL-20, B7-RMB-20, A7-APT-21
Select one (A7-VCF-21, A7-ISF-21, A7-FIS-21, A7-FIE-21, A7-FR2-17, A7-REI-21)

FACULTY OF BUSINESS & ACCOUNTING

(Continued)

Semester 7

- A7-FIM-20, A7-RP1-20, A7- INF-20, B7-CGV-20 **Select one** (B8-ENI-20, B8-SOE-21, E8 - ISD-18)

Semester 8

A7-PPR-21, A7-RP2-20

Admissions Criteria

1) Applicants are expected to have successfully completed secondary schooling. The typical entry requirement is BGCSE or IGCSE (in Botswana), LGCSE (in Lesotho) or other equivalent secondary school qualification.

2) BGCSE/equivalent with minimum of 5 Passes.

3) Applicants in possession of a Diploma or Higher Diploma in related field may be given exemptions based on the credit point equivalency.

4) For enquiries and more information please visit our website: www.bothouniversity.com



Bachelor of Commerce in Investment and Banking

Programme details:

The programme consists of core (required) and elective modules. Some modules may have pre-requisites (i.e. may require the students to pass another module or set of modules first). The number at the end of the module in parenthesis indicates the credit load of the module. One credit is equal to 10 hours of learning (guided in class and independent combined); therefore 10-credit module requires on average 100 hours of learning from the students.

Core Modules:

- C5-IMO-20: Introduction to MS Office (10)
- D5-AWB-20: Academic writing for business (10)
- B5-BS1-17: Business Mathematics & Statistics 1 (10)
- B5-LAB-20: Legal aspects of Business (10)
- B5-BM1-20: Business Management 1 (10)
- A5-INI-21: Introduction to Investments (10)
- B5-BS2-17: Business Mathematics & Statistics 2 (10)
- A6-COA-20: Cost Accounting (10)
- A5-IOB-21: Introduction to Banking (20)
- A6-FA1-17: Financial Accounting 1 (10)
- A6-MFS-21: Marketing of Financial Services (10)
- A6-CAF-17: Computerised Accounting: (10)
- A6-TAX-20: Taxation (10)
- B6-MIE-17: Microeconomics (10)
- A6-BL1-21: Banking Law and Practice 1 (10)
- A6-BTP-21: Banking Theory and practice (10)
- A6-INA-21: Investment Analysis (10)
- B6-MAE-17: Macroeconomics (10)

- A6-INB-21: Investment Banking (10)
- A6-TM1-21: Treasury Management 1 (10)
- A6-FM1-20: Financial Management 1 (10)
- A6-FA2-17: Financial Accounting 2 (10)
- A6-ETG-21: Ethics and Governance (10)
- A7-TM2-21: Treasury Management 2 (10)
- A7-BL2-21: Banking Law and Practice 2 (20)
- A7-BFE-21: Banking and Foreign Exchange (10)
- A7-COL-17: Company Law (10)
- A7-BAD-21: Banking and Development (10)
- A7-EFM-21: Emerging Financial Markets (10)
- A7-FIE-21: Financial Engineering (10)
- A7-POM-21: Portfolio Management (10)
- B7-RMB-20: Research Methods in Business (10)
- A7-RMI-21: Principles of Risk Management & Insurance (10)
- A7-CRL-21: Credit Risk and Bank Lending (10)
- A7-RP1-20: Research Project 1: Proposal (10)
- A7-FIM-20: Financial Modeling (10)
- A7-ITF-21: International Trade Finance (10)
- A7-PPR-21: Professional Practice (40)
- A7-RP2-20: Research Project 2: Dissertation (20)

FACULTY OF BUSINESS & ACCOUNTING

(Continued)

Elective Modules:

- A7-CFO-21: Corporate Financial Operations (10)
- A7- BEF- 21: Behavioral Finance (10)
- A7- ISF-21: Islamic Finance (10)
- A7-FSF-21: Financial Innovation and Structured Finance (10)
- A7-FIS-21: Financial Strategy (10)
- B8-ENI-20: Entrepreneurship and Innovation (20)
- B8-SOE-21: Social Entrepreneurship (20)
- E8-ISD-18: Innovation for Sustainable Development (20)

Semester 1

- C5-IMO-20, D5-AWB-20, B5-BS1-17, B5-LAB-20, B5-BM1-20, A5-INI-21

Semester 2

- B5-BS2-17, A6-COA-20, A5-IOB-21, A6-FA1-17, A6-MFS-21

Semester 3

- A6-CAF-17, A6-TAX-20, B6-MIE-17, A6-BL1-21, A6-BTP-21, A6-INA-21

Semester 4

- B6-MAE-17, A6-INB-21, A6-TM1-21, A6-FM1-20, A6-FA2-17, A6-ETG-21

Semester 5

- A7-TM2-21, A7-BL2-21, A7-BFE-21, A7-COL-17, A7-BAD-21

Semester 6

- A7-EFM-21, A7-FIE-21, A7-POM-21, B7-RMB-20, A7-RMI-21 **Select one** (A7-CFO-21, A7-BEF-21, A7-ISF-21, A7-FSF-21, A7 - FIS - 21)

Semester 7

- A7-CRL-21, A7-RP1-20, A7-FIM-20, A7-ITF-21 **Select one** (B8-ENI-20, B8-SOE-21, E8-ISD-18)

Semester 8

- A7-PPR-21, A7-RP2-20

Recommended Full-Time Study Path (4 years)

Admissions Criteria

1) Applicants are expected to have successfully completed secondary schooling. The typical entry requirement is BGCSE or IGCSE (in Botswana), LGCSE (in Lesotho) or other equivalent secondary school qualification.

2) BGCSE/equivalent with minimum of 5 Passes.

3) Applicants in possession of a Diploma or Higher Diploma in related field may be given exemptions based on the credit point equivalency.

4) For enquiries and more information please visit our website:
www.bothouniversity.com

Bachelor of Commerce in Accounting

Programme details:

The programme consists of core (required) and elective modules as follows. Some modules may have pre-requisites (i.e. may require the student to pass another module or set of modules first). Some modules may be co-requisite (i.e. such modules are required to be taken together). The number at the end of the module in parenthesis indicates the credit load of the module. 1 credit is equal to 10 hours of learning (guided, in-class and independent combined); therefore a 10-credit module requires on average 100 hours of learning from the student.

Core modules:

- A5 - IFA-20: Introduction to Financial Accounting (10)
- A6 - CP1-20: Computerised Accounting 1 (10)
- A6 - TA1-20: Taxation 1 (10)
- A6 - COA-20: Cost Accounting (10)
- A6 - CP2-20: Computerised Accounting 2 (10)
- A6 - CA1-20: Corporate Administration 1 (10)
- A6 - FA1-17: Financial Accounting 1 (10)
- A6 - ASS-20: Audit and Assurance (20)
- A6 - FM1-20: Financial Management 1 (10)
- A6 - CSC-20: Corporate Secretaryship (10)
- A7 - FA2-20: Financial Accounting 2 (10)
- A7 - TA2-20: Taxation 2 (20)
- A7 - MAC-17: Management Accounting (20)
- A7 - FIR-13: Financial Reporting (20)
- A7 - FM2-20: Financial Management 2 (10)
- A7 - COL-20: Company Law (20)
- A7 - BAV-20: Business Analysis and Valuation Using Financial Statements (10)
- A7-CA2-20: Corporate Administration 2 (10)
- A7 - PSR-20: Public Sector Financial Reporting (10)
- B7 - RP1-20: Research Project 1: Proposal Writing (10)
- A7 - PRA-20: Professional Practice in Accounting (40)

- B7 - RP2- 20: Research Project 2: Dissertation (20)
- B5 - BS1 - 17: Business Mathematics & Statistics 1 (10)
- B5 - LAB - 20: Legal Aspects of Business (10)
- A5 - FBF - 20: Fundamentals of Business & Finance (10)
- B5 - BM1 - 20: Business Management 1 (10)
- B5 - PMK-17: Principles of Marketing (10)
- B5 -BS2-17: Business Mathematics & Statistics 2 (10)
- D6-AWB-20: Academic Writing for Business (10)
- A6 - BEA-20: Business Ethics and Assurance (10)
- B5-MIE-17: Micro- economics (10)
- B6 - MAE-17: Macro Economics (10)
- B7 - RMB-20: Research Methods in Business (10)
- B7-CGV-20: Corporate Governance (10)
- C5 - IMO - 20: Introduction to MS Office (10)
- B6-BM2-20 Business Management 2 (10)

Elective Modules:

- A7-CUA-20: Computerised Auditing (10)
- A7-RMI-20: Risk Management & Insurance (10)
- A7-TA3-20: Advanced Taxation 3 (10)
- A7-AS2-20: Advanced Audit & Assurance 2(10)
- A7-CS2-20: Corporate Secretaryship (10)
- B8-SOE-21: Social Entrepreneurship(20)
- E8-ISD-17: Innovation for Sustainable Development (20)
- B8 - ENI-20: Entrepreneurship and Innovation (20)

Semester 1

- C5-IMO-20,D5-AWB-20,B5-BS1-17, B5-LAB-20, A5- FBF-20 B5-BM1- 20,

Semester 2

- B5-PMK-20, B5-BS2-17, A5-IFA-20,A6-BEA-20, B6-BM2-20, A6-CP1-20

Semester 3

- A6- TA1-20, B5-MIE-17, A6-COA-20, A6- CP2-20, A6 - CA1-20, A6- FA1-17

Semester 4

- B6-MAE-17, A6-ASS-20, A6 - FM1-20, A6-CSC-20, A7- FA2-17

FACULTY OF BUSINESS & ACCOUNTING

(Continued)



Semester 5

- A7-TA2-20, A7-MAC-17, A7-FIR-13,

Semester 6

- A7 - FM2-20, B7- RMB-20, A7-COL-17, A7-BAV-20 **Select one** (A7-CS2-20, A7- CUA-20, A7-RMI-20, A7-TA3-20,A7-AS2-20)

Semester 7

- A7-PSR- 20, A7-RP1-20, B7-GVC-20, A7-CA2-20
Select one (B8-ENI-20, B8-SOE-21, E8-ISD-17)

Semester 8

- A7-PRA-20, A7-RP2-20

Admission criteria

1) Applicants are expected to have successfully completed secondary schooling. The typical entry requirement is BGCSE or IGCSE (in Botswana), LGCSE (in Lesotho) or other equivalent secondary school qualification.

2) BGCSE/equivalent with minimum of 5 Passes.

3) Applicants in possession of a Diploma or Higher Diploma in related field may be given exemptions based on the credit point equivalency.

4) For enquiries and more information please visit our website: www.bothouniversity.com



Bachelor of Commerce in Risk Management

Programme details:

The programme consists of core (required) and elective modules as follows. Some modules may have pre-requisites (i.e., may require the student to pass another module or set of modules first). Some modules may be co-requisite (i.e., such modules are required to be taken together). The number at the end of the module in parenthesis indicates the credit load of the module. 1 credit is equal to 10 hours of learning (guided, in- class and independent combined); therefore a 10-credit module requires on average 100 hours of learning from the student.

Core Modules:

- B5-BS1-17: Business Mathematics and Statistics 1 (10)
- C5-IMO-20: Introduction to MS Office (10)
- D5-AWB-20: Academic Writing for Business (10)
- B5-LAB-20: Legal Aspects of Business (10)
- A5-RM1-20: Risk Management 1 (10)
- B5-PMK-20: Principles of Marketing (10)
- B5-BM1- 20: Business Management 1 (10)
- B5-BS2-17: Business Mathematics and Statistics 2 (10)
- A6-FA1-17: Financial Accounting 1 (10)
- B5-MIE-17: Microeconomics (10)
- A6-RM2-20: Risk Management 2 (20)
- A6-STI-20: Short Term Insurance: Personal Lines (10)
- A6-CAF-17: Computerised Accounting (10)
- B6-MAE-17: Macroeconomics (10)
- A6-RAT-20: Risk Assessment & Treatment(10)
- A6-COA-20: Cost Accounting (10)
- A6-LTI-20: Long Term Insurance (10)
- A6-ICO-20: Insurance Company Operations (10)
- A6-TAX-20: Taxation (10)
- A6-FM1-20: Financial Management 1(10)
- A6-RGC-20: Risk Governance and Culture (10)
- A6-FA2-17: Financial Accounting 2 (10)

- A6-EMP-20: Employee Benefits Management (10)
- A7-PLR-20: Property & Liability Risk Management (20)
- A7-CLI-20: Commercial Lines Insurance (10)
- A7-WMG-20: Wealth Management (10)
- A7-HIA-20: Health Insurance and Administration (20)
- A7-RAD-20: Risk Analysis & Decision Making (20)
- B7-RMB-20: Research Methods for Business (10)
- A7-CRM-20: Credit Risk Management (20)
- A7-FIM-20: Financial Modeling (10)
- A7-FRM-20: Financial Risk Management (10)
- A7-RP1-20: Research Project 1: Proposal Writing (10)
- A7-REI-20: Reinsurance (10)
- A7-PRA-20: Professional Practice in Accounting (40)
- B7-RP2- 20: Research Project 2: Dissertation (20)

Elective Modules:

- A7-PIA-20: Portfolio Management and Investment Analysis (10)
- A7-INF-20: International Finance (10)
- A7-RIF-20: Risk Financing (10)
- B8-SOE-20: Social Entrepreneurship (20)
- B8-ENI-20: Entrepreneurship and Innovation (20)
- E8-ISD-18: Innovation for Sustainable Development (20)

Recommended Full-Time Study Path (4 years)

Semester 1

- B5-BS1-17, C5-IMO-20, D5-AWB-20, B5-LAB-20, A5- RM1-20, B5- BM1- 20

Semester 2

- B5-PMK-20, B5-BS2-17, A6-FA1-17, A6-RM2-20, A6-STI-20

FACULTY OF BUSINESS & ACCOUNTING

(Continued)

Semester 3

- A6-CAF-17, A6-RAT-20, B5-MIE-17, A6-COA-20, A6-LTI-20, A6-ICO-20

Semester 4

- B6-MAE-17, A6-TAX-20, A6-FM1-20, A6-RGC-20, A6-FA2-17, A6-EMP-20

Semester 5

- A7-RAD-20, A7-PLR-20, A7-CLI-20, A7-WMG-20

Semester 6

- A7-HIA-20, B7-RMB-20, A7-CRM-20
Select One (A7-PIA-20, A7-INF-20, A7-RIF-20)

Semester 7

- A7-REI-20, A7-RP1-20, A7-FIM-20, A7-FRM-20 **Select one** (B8-SOE-21, B8-ENI-20, E8-ISD-18)

Semester 8

- A7-PRA-20, A7-RP2- 20

Admission Criteria

1) Applicants are expected to have successfully completed secondary schooling. The typical entry requirement is BGCSE or IGCSE (in Botswana), LGCSE (in Lesotho) or other equivalent secondary school qualification.

2) BGCSE/equivalent with minimum of 5 Passes.

3) Applicants in possession of a Diploma or Higher Diploma in related field may be given exemptions based on the credit point equivalency.

4) For enquiries and more information please visit our website: www.bothouniversity.com



Bachelor of Business Administration in Business Management

Programme details:

The programme consists of 11 core (required) modules and 8 Elective Modules. The Research Methodology is a pre-requisite for the Dissertation in the MBA Programme. Some modules may be co-requisite (i.e. such modules are required to be taken together). The number at the end of the module in parenthesis indicates the credit load of the module. 1 credit is equal to 10 hours of learning (guided, inclass and independent combined); therefore a 10-credit module requires on average 100 hours of learning from the student. The MBA Programme will be Block Release and Distance Learning

Core modules:

- C5-IMO-20 Introduction to MS Office (10)
- D5-AWB-20 Academic Writing for Business (10)
- B5-BS1-17 Business Mathematics & Statistics 1 (10)
- B5-LAB-20 Legal Aspects of Business (10)
- A5-IFA-20 Introduction to Financial Accounting (10)
- B5-BM1-20 Business Management 1 (10)
- B5-PMK-20 Principles of Marketing (10)
- B5-BS2-17 Business Mathematics & Statistics 2 (10)
- B6-MIE-17 Microeconomics (10)
- A6-FA1-17 Financial Accounting 1 (10)
- B6-BM2 -20 Business Management 2 (10)
- B7-CRM -20 Customer Relationship Management (10)
- B6-MAE-17 Macroeconomics (10)
- B6-SBM-21 Small Business Management (10)
- B6-FFM-20 Fundamentals of Financial Management (10)
- A6-FA2-17 Financial Accounting 2 (10)
- B6-OBE-20 Organisational Behaviour (10)
- B6-BIS-20 Business Information Systems (10)
- B6-OPM-20 Operations Management (10)
- A6-CAF-17 Computerized Accounting (10)
- B6-COB-21 Consumer Behaviour (10)
- B6-MKT-20 Marketing Management (10)
- A6-COA-20 Cost Accounting (10)
- B6-PMT-21 Purchasing Management (10)
- B7-QUM-20 Quality Management (10)
- B7-CFI-21 Corporate Finance (10)
- B7-PRM-20 Project Management (10)
- B7-IEM-20 Import and Export Management (10)
- B7-EBS-20 E - Business (10)
- B7-HRM-20 Human Resource Management (10)
- B7-BRM-21 Research Methods in Business (10)
- B7-TLM-21 Transport and Logistics Management (10)
- B7-KNM-21 Knowledge Management (10)
- B7-STM-20 Strategic Management (20)
- B7-RP1-20 Research Project 1: Proposal Writing (10)
- B7-PPB-20 Professional Practice in Business (40)
- B7-RP2-20 Research Project 2: Dissertation (20)

FACULTY OF BUSINESS & ACCOUNTING

(Continued)

Elective Modules:

- B7-MNC-21 Managing Consulting (10)
- B7-IBM-20 International Business Management (10)
- B7-FBM-20 Family Business Management (10)
- B7-BEC-21 Business Ethics and Corporate Social Responsibility (10)
- B7-CHM-20 Change Management (10)
- B7-CGV-20 Corporate Governance (10)
- B7-BMT-20 Brand Management (10)
- B8-ENI-20 Entrepreneurship and Innovation (20)
- B8-SOE-21 Social Entrepreneurship (20)
- E8-ISD-18 Innovation for Sustainable Development (20)

Recommended full-time study path: 4 Years

Semester 1

- C5-IMO-20, D5-AWB-20, B5-BS1-17, B5-LAB-20, A5-IFA-20, B5-BM1-20

Semester 2

- B5-PMK-20, B5-BS2-17, B6-MIE-17, A6-FA1-17, B6-BM2 -20, B7-CRM-20

Semester 3

- B6-MAE-17, B6-SBM-21, B6-FFM-20, A6-FA2-17, B6-OBE-20, B6-BIS-20

Semester 4

- B6-OPM-20, A6-CAF -17, B6-COB-21, B6-MKT-20, A6-COA-20, B6-PMT-21

Semester 5

- B7-QUM-20, B7-CFI-21, B7-PRM-20, B7-IEM-20 **select two** (B7-MNC-21, B7-IBM-20, B7-FBM-20)

Semester 6

- B7-EBS-20, B7-HRM-20, B7-BRM-21, B7-TLM-21 **select two** (B7-BEC-21, B7-CHM-20, B7-CGV-20, B7-BMT-20)

Semester 7

- B7-KNM-21, B7-STM-20, B7-RP1-20 **select one** (B8-ENI-20, B8-SOE-21, E8-ISD-18)

Semester 8

- B7-PPB-20, B7-RP2-20

Admissions Criteria

1) BGCSE/equivalent with minimum of 5 Passes.

2) Recognition of Prior Learning (RPL): Access through Recognition of Prior Learning (RPL) and Credit Accumulation and Transfer (CAT) in accordance with the RPL and CAT National Policies.

Bachelor of Commerce in Supply Chain Management

Programme details:

In today's dynamic business environment, effective supply chain management is the key to success for organizations across industries. A degree in Supply Chain Management equips individuals with the skills and knowledge needed to navigate the complexities of the modern global commerce. This specialized field focuses on the efficient and seamless coordination of every aspect involved in the production and distribution of goods and services. Supply chain management plays a crucial role in optimizing operations, reducing costs, and ensuring seamless coordination across the entire supply chain.

Core modules:

- C5-IMO-20: Introduction to MS Office (10)
- B6-BS1-17: Business Mathematics and Statistics 1 (10)
- D5-AWB-20: Academic Writing for Business (10)
- B5-PMK-17: Principles of Marketing (10)
- B6-PMA-23: Principles of Management (10)
- B5-PHR-23: Principles of Human Resource Management (10)
- B6-FPM-21: Fundamentals of Project Management (10)
- B7-MIE-21: Microeconomics (15)
- B7-BS2-23: Business Mathematics and Statistics 2 (15)
- B7-BUC-23: Business Communication (15)
- A5-IFA-20: Introduction Financial Accounting (10)
- B7-MLO-23: Manufacturing & Logistics (15)
- B6-FOM-21: Fundamentals of Operations Management (10)
- B7-LAB-23: Legal Aspects of Business (15)
- B7-SCA-23: Supply Chain Alignment (15)
- B7-MAE-23: Macroeconomics (15)
- A7-FA1-23: Financial Accounting 1 (15)
- B7-FAM-23: Functional Areas of Management (15)
- A7-MAC-23: Management Accounting (15)
- B7-OBE-23: Organisational Behaviour (15)
- B7-POM-23: Production & Operations Management (10)
- B7-SEP-23: Supply Chain Relationship and Enterprise Planning (15)
- B7-BIS-23: Business Information Systems (15)
- B7-PST-23: Purchasing Management and Supply Tools (15)
- B7-TLM-23: Transportation & Logistics Management (15)
- B7-SCT-23: Supply Chain Technology (15)
- B7-FIM-23: Financial Management 1 (15)
- B7-SSO-23: Strategic Sourcing (15)
- B7-STM-23: Strategic Management (10)
- B8-ENI-20: Entrepreneurship and Innovation (20)
- B7-BRM-21: Research Methods: Research Methods in Business (10)
- B7-PPB-20: Professional Practice in Business (40)
- B7-RP2-20: Research Project 2: Dissertation (20)

FACULTY OF BUSINESS & ACCOUNTING

(Continued)

Elective Modules:

- B7- ING-23: International Logistics Management (15)
- B7-OPM-23: Operations Management (15)
- B7-WTM-23: Warehousing and Terminal Management (15)
- B7-PRM-23: Project Management (15)

Recommended full-time study path: 4 Years

Semester 1

- C5-IMO-20, B6-BS1-17, D5-AWB-20, B5-PMK-17, B6-PMA-23, B5-PHR-23, B6-FPM-21

Semester 2

- B7-MIE-21, B7-BS2-23, B7-BUC-23, A5-IFA-20, B7-MLO-23

Semester 3

- 6-FOM-21, B7-LAB-23, B7-SCA-23, B7-MAE-23, A7-FA1-23

Semester 4

- B7-FAM-23, A7-MAC-23, B7-OBE-23, B7-POM-23

Semester 5

- B7-SEP-23, B7-BIS-23, B7-PST-23
Select one (B7- ING-23, B7-OPM-23)

Semester 6

- B7-TLM-23, B7-SCT-23, B7-FIM-23
Select one (B7-WTM-23, B7-PRM-23)

Semester 7

- B7-SSO-23, B7-STM-23, B8-ENI-20, B7- BRM-21

Semester 8

- B7-PPB-20, B7-RP2-20

Admissions Criteria

1) BGCSE/equivalent with minimum of 5 Passes.

2) Recognition of Prior Learning (RPL): Access through Recognition of Prior Learning (RPL) and Credit Accumulation and Transfer (CAT) in accordance with the RPL and CAT National Policies.



*The programmes offered in this document are accredited by BQA and offered at Botho University at the time of print. Please refer to your offer letter from the admissions department for any changes in programme name or duration that may occur due to regulatory requirements.

Master of Science in Information Systems Management

Programme details:

The programme consists of core (required) and elective modules as indicated below. Some modules may have pre-requisites (i.e. may require students to pass another module or set of modules first). Some modules may be co-requisite (such modules are required to be taken together). The number at the end of the module in parenthesis indicates the credit load of the module. 1 credit is equal to 10 hours of learning (guided, in-class and independent combined); therefore a 10 credit module requires an average of 100 hours of learning from the student.

Core modules:

- C9-BDM-22: Big Data Management (20)
- C9-SDG-22: System Development Management and Governance(20)
- C9-ISM-15: Information Security Management (20)
- C9-IPM-22: ICT Project Management (20)
- C9-PIM-22: Principles of Information Technology Management (20)
- C9-MIS-22: Management Information Systems (20)
- C9-RPP-15: Research Project 1: Proposal Writing (20)
- C9-PWD-15: Project Work 2: Dissertation (60)

Elective Modules:

Select any two:

- C9-IFM-22 Infrastructure Management(20)
- C9-ICM-22 ICT Strategic Management (20)
- C9-CMS-22 Content Management Systems (20)
- C9-DAN-22 Data Analytics (20)

Recommended full-time study path (2 years):

The duration of this programme is two years and will be offered in Blended and Distance Learning. During study, students must undergo coursework and dissertation.

Semester 1:

- C9-BDM-22, C9-SDG-21, **Select one** (C9-IFM-22, C9- ICM-21)

Semester 2:

- C9-ISM-15, C9-IPM-22, **Select one** (C9-CMS-22, C9-DAN-22)

Semester 3:

- C9-PIM-22, C9-MIS-22, C9-RPP-15

Semester 4:

- C9-PWD-15

Admissions Criteria

Entry into this qualification is through any one of the following requirements:

1) The minimum admission requirement is a bachelor's degree Honors in Computing/ Computer Science / Information Technology or any computer related field.

2)A Post-Graduate Diploma (NCQF level 8) in the field of study (Computing) may also meet admission requirements provided that at least 20 credits at level 8 have been allocated to research methodology within or additional to the qualification.

3) Applicants that do not meet the above criteria but possess relevant industry experience will be considered through recognition of prior learning (RPL).

4) For enquiries and more information please visit our website: www.bothouniversity.com

Bachelor of Science in Data Science

Programme details:

The programme consists of core (required) and elective modules as indicated below. Some modules may have pre-requisites (i.e., may require students to pass another module or set of modules first). Some modules may be co-requisite (such modules are required to be taken together). The number at the end of the module in parenthesis indicates the credit load of the module. 1 credit is equal to 10 hours of learning (guided, in-class and independent combined); therefore a 10-credit module requires an average of 100 hours of learning from the student.

Core modules:

- E5-PHY-22: Physics (12)
- E5-PCA-22: Pre-Calculus (24)
- C6-CSA-22: Computer Architecture (12)
- D5-WCO-22: Writing and Communication (12)
- C5-PS1-22: Programming Skill 1(6)
- B5-BEN-22: Business and Entrepreneurship (30)
- C6-OPS-22: Operating Systems (12)
- E6-CAL-22: Calculus (12)
- C6-PS2-22: Programming Skill 2 (12)
- C6-COM-22: Computer Networks (12)
- C7-DBS-22: Databases (12)
- E6-DMC-22: Discrete Mathematics for Computer Science (12)
- C6-DSA-22: Data Structures and Algorithms (12)
- C7-DMI-22: Data Mining (12)
- C7-REM-22: Research Methodology (12)
- E7-PAS-22: Probability and Statistics (12)
- C7-PS3-22: Programming Skill 3 (12)
- C7-DVI-22: Data Visualization (12)
- C7-PMA-22: Project Management (12)
- E7-LAL-22: Linear Algebra (12)
- C7-MLE-22: Machine Learning (24)
- C7-ARI-22: Artificial Intelligence (12)
- C7-DAN-22: Data Analytics (12)
- C7-PPR-22: Industrial Attachment (60)
- E7-MUS-22: Multivariate Statistics (12)
- C7-IPD-22: Individual Project in Data Science (24)
- C7-PIE-22: Professional Issues and Ethics (12)

Elective Modules:

- D5-BIO-22: Biology 1 (12)
- E5-CHE-22: Chemistry 1 (12)
- C6-CLC-22: Cloud Computing (9)
- C6-EM1-22: Emerging Technologies 1 (9)
- C6-CRG-20: Cryptography (9)
- C6-MOS-22: Mobile Operating Systems (9)
- C6-CRG-20: Cryptography (9)
- C6-MOS-22: Mobile Operating Systems (9)
- C6-ACN-22: Advanced Computer Networks (9)
- C6-OPT-22: Optimization (9)
- D7-CBI-22: Computational Biology (9)
- B7-CFI-22: Computational Finance (9)
- E7-COS-22: Computational Statistics (9)
- C7-EM2-22: Emerging Technologies (9)
- C7-NLP-22: Nature Language Processing (9)
- C7-BDD-22: Big Data Databases(9)
- C7-AAN-22: Algorithm Analysis (9)
- C7-BDT-22: Big Data Technologies(9)
- C7-AAI-22: Advanced Artificial Intelligence (9)

Recommended full-time study path (4 years):

Semester 1

- E5-PHY-22, E5-PCA-22, C6-CSA-22, D5-WCO-22

Semester 2

- C5-PS1-22, B5-BEN-22, C6-OPS-22
Select one (D5-BIO-22, E5-CHE-22)

Semester 3

- E6-CAL-22, C6-PS2-22, C6-COM-22, C7-DBS-22 **Select one** (C6-CLC-22, C6-EM1-22)

Semester 4

- E6-DMC-22, C6-DSA-22, C7-DMI-22, C7-REM-22 **Select one** (C6-CRG-20, C6-MOS-22) **Select one** (C6-ACN-22, C6-OPT-22)

Semester 5

- E7-PAS-22, C7-PS3-22, C7-DVI-22, C7-PMA-22, E7-LAL-22

Semester 6

- C7-MLE-22, C7-ARI-22, C7-DAN-22
Select one (C7-EM2-22, C7-NLP-22)
Select one (C7-CBI-22, B7-CFI-22,
E7- COS-22)

Semester 7

- C7-PPR-22

Semester 8

- E7-MUS-22, C7-IPD-22, C7-PIE-22 **Select one** (C7-BDD-22,C7-AAN-22)**Select one** (C7-BDT-22,C7-AAI-2)

Admissions Criteria

- 1)** Applicants are expected to have successfully completed secondary schooling. The typical entry requirement is BGCSE or IGCSE (in Botswana), LGCSE (in Lesotho) or other equivalent secondary school qualification.
- 2)** BGCSE/equivalent with minimum Pass (D) in 5 subjects including English and Mathematics.
- 3)** Applicants in possession of a Diploma or Higher Diploma in related field may be given exemptions based on the credit point equivalency.
- 4)** For enquiries and more information please visit our website: www.bothouniversity.com



Bachelor of Engineering in Electrical Engineering

Programme details:

The programme consists of core (required) and elective modules as indicated below. Some modules may have pre-requisites (i.e., may require students to pass another module or set of modules first). Some modules may be co-requisite (such modules are required to be taken together). The number at the end of the module in parenthesis indicates the credit load of the module. 1 credit is equal to 10 hours of learning (guided, in-class and independent combined); therefore a 10-credit module requires an average of 100 hours of learning from the student.

Fundamental Modules:

- E5-PCM-23 Pre-calculus Mathematics (10)
- E5-EWP-20 Engineering Workshop Practice (10)
- E5-PEE-23 Principles of Electrical Engineering (10)
- C5-CE1-20 Computer and its essentials – 1 (10)
- E5-GC1-23 General Chemistry – 1 (15)
- E5-PH1-23 Physics – 1 (15)
- E5-PH2-23 Physics – 2 (15)
- E5-GC2-23 General Chemistry – 2 (15)
- E5-EM1-23 Engineering Mathematics – 1 (10)
- C6-CE2-20 Computer and its essentials – 2 (10)
- E6-LAM-23 Linear Algebra (10)
- D6-ASM-20 Academic writing for STEM (10)
- E6-EM2-23 Engineering Mathematics – 2 (10)
- E6-EM3-23 Engineering Mathematics – 3 (10)
- E6-EM4-23 Engineering Mathematics – 4 (10)
- E6-ECA-23 Electrical Circuit Analysis (10)
- E6-EMW-23 Electromagnetism & Waves (10)
- E7-SES-23 Sustainable Energy Systems (10)
- E7-PTD-23 Power Transmission and Distribution (10)
- E7-AMT-23 Applied mechanics and thermo-fluids (10)
- E6-EDC-23 Electronic Devices and Circuits (10)
- E6-DP1-23 Year 2 design make project (10)
- E6-AET-23 Analogue Electronic Circuits Design (10)
- E6-DET -23 Digital Electronics (10)
- E6-ADE-23 Analog and Digital Electronics Lab (10)
- E7-MAD-23 Microprocessor & Microcontrollers Design (10)
- E7-MML-23 Microprocessor & Microcontroller Design Lab (10)
- E7-DSP-23 Digital Signal Processing (10)
- E7-CSD-23 Control System Design (10)
- E7-CSL-23 Control System Design Laboratory (10)
- E7-DP2-23 Year 3 design make project (10)
- E7-IPP-23 Instrumentation and PLC programming (10)
- E8-RMS-20 Research Methods in STEM (10)
- E8- EPS-23 Electrical Power Systems Design (10)
- E8-ESL-23 Electrical Power Systems Design Lab (10)
- E8-EMD-23 Electrical Machines and Drives (10)
- E8-EML-23 Electrical Machinery Lab (10)
- E7-EED-23 Electrical Engineering Design (10)
- E7-PSA-23 Power System Analysis (10)
- E8 -EIS-23 Engineers in Society (10)
- B8- ENT-23 Entrepreneurship and Innovation (10)
- E8-POD-23 Power Electronics and Drives (10)
- E8-PR1-23 Research Project 1 (10)
- E8-ESD-23 Embedded System Design (10)
- E7-HVE-23 High Voltage Engineering (10)
- E8-MEC-23 Modern Energy Conversion (10)
- E8-PR2-23 Research Project 2 (10)
- E8-PPR-23 Professional Practice (60)

Core modules:

- E5-END-20 Engineering Drawing (10)
- E6-PPC -23 Procedural Programming in C and Python (10)
- E6-SAS-23 Signals and System Design (10)

Elective Modules:

- E7-MSS-23 Measurement Systems (10)
- E7-PSG-23 Protection and Switchgear (10)
- E7-MIN-23 Medical Instrumentation (10)
- E7-PER-23 Power Electronics for Renewable Energy Systems (10)
- E7-CDE-23 CAD design of Electrical services (10)
- E7-EEC-23 Engineering Economics (10)

Recommended full-time study path (5½ years):

Semester 1

- E5-PH1-23, E5-GC1-23, C5-CE1-23, E5-PEE-23, E5-EWP-20, E5-PCM-23

Semester 2

- E5-PH2-23, E5-GC2-23, E5-EM1-23, E5-END-20, C6-CE2-20, E6-LAM-23

Semester 3

- E6-PPC -23, D6-AWS-20, E6-EM2-23, E6-SAS-23, E6-ECA-23, E6-EMW-23

Semester 4

- E7-SES-23, E7-PTD-23, E6-EM3-23, E7-AMT-23, E6-EDC-23, E6-DP1-23

Semester 5

- E6-AET-23, E6-DET -23, E6-ADE-23, E6-EM4-23, E7-MMD-23, E7-MML-17

Semester 6

- E7-DSP-23, E7-CSD-23, E7-CSL-23, E7-DP2-23, E7-IPP-23, E8-RMS-20

Semester 7

- E8- EPS-23, E8-ESL-23, E8-EMD-23, E8-EML-23, E7-EED-23, **select one** (E7-MSS-23, E7-PSG-23, E7-MIN-23)

Semester 8

- E7-PSA-23, E8-EIS-23, B8- ENT-23, E8-POD-23, E8-PR1-23, **select one** (E7-PER-23, E7-CDE-23, E7-EEC-23)

Semester 9

- E8-ESD-23, E7-HVE-23, E8-MEC-23, E8-PR2-23

Semester 10

- E8-PPR-23

Admissions Criteria

1) Applicants are expected to have successfully completed secondary schooling. The typical entry requirement is BGCSE or IGCSE (in Botswana), LGCSE (in Lesotho) or other equivalent secondary school qualification.

2) BGCSE/equivalent with minimum Pass (D) in 5 subjects including English, Mathematics and Physics/Double Sciences/Physics + Chemistry.

3) Applicants in possession of a Diploma or Higher Diploma in related field will be given exemptions based on the credit point equivalency.

4) For enquiries and more information please visit our **General Admissions Information page**.

Bachelor of Science in Cyber Security and Risk Management

Programme details:

The programme consists of core (required) and elective modules as indicated below. Some modules may have prerequisites (i.e. may require students to pass another module or set of modules first). The number at the end of the module in parenthesis indicates the credit load of the module. 1 credit is equal to 10 hours of learning (guided, in-class and independent combined); therefore a 10-credit module requires an average of 100 hours of learning from the student.

Core modules:

- C5-CTW-23: Communication and Technical Writing (10)
- C5-ICS-23: Introduction to computer in Cyber Security (10)
- C6-BCS-23: Basics for Corporate Security and Risk Management (10)
- C5-OSC-23: Operating Systems Concepts (10)
- C5-CSE-23: Cybercrime and Society (10)
- C5-FIS-23: Fundamentals of Information System security (10)
- C6-COA-23: Computer Organization (10)
- C6-TCS-23: Technology and Cyber Security (10)
- C6-CNW-23: Computer Networks (10)
- C6-PLC-23: Programming languages for cyber security (10)
- C6-RL1-23: Introduction to Risk Analysis and Loss Prevention (10)
- C6-BMA-23: Business Mathematics (10)
- C6-SPI-23: Security Policies and Implementation Issues (10)
- C6-NFV-23: Network security, firewalls and VPNs (10)
- C6-ISS-23: Information Systems and Strategy (10)
- C7-SWL-23: Security strategies in windows and Linux platforms (10)
- C7-DFM-23: Database fundamentals (10)
- C7-PSM-23: Principles of Security Management (10)
- C7-AIC-23: Auditing IT Infrastructures for Compliance (10)
- C7-MRI-23: Managing risk in information systems (10)
- C7-ISC-23: Internet Security (10)
- C7-PMA-23: Project Management (10)
- C7-WMS-23: Wireless and mobile device security (10)
- C7-IKM-23: Information and Knowledge Management (10)
- C7-CWP-23: Cyber Security and Workplace Safety programs (10)
- C7-CSM-23: Cyber security risk management (10)
- C7-CAP-23: Cyber Security and Asset Protection (10)
- C7-LCS-23: Legal issues in Cyber Security (10)
- C7-CME-23: Cybersecurity Metrics and Evaluation (10)
- C7-EHK-23: Ethical Hacking (10)
- C7-RME-23: Research Methods (10)
- C7-CPT-23: Crime Protection (10)
- C7-IRI-23: Incident Response and Investigation (10)
- C7-WPB-23: Workplace Safety Programs in Botswana and the SADC Region (10)
- C7-ISM-23: Institutional Security Management (10)
- C7-INM-23: Innovation Management (10)
- C7-RCP-23: Research Capstone Project (20)

- C7-CEM-23: Crisis and Emergency Management (10)
- C7-ENT-23: Entrepreneurship (10)
- C7-RL2-23: Advanced Risk Analysis and Loss Prevention (10)
- C7-IAT-23: Industrial Attachment (40)
- C7-DIS-23: Dissertation (10)

Elective Modules:

- C7-ORB-23: Organizational Behaviour (10)
- C7-SMA-23: Strategic Management (10)
- C7-PRC-23: Public Relations and Customer Care (10)
- C8-CCJ-23: Criminology and Criminal Justice (20)
- C8-FAC-23: Forensic Accounting (20)
- C8-FIM-23: Fraud Investigation and Management (20)

Recommended full-time study path

Semester 1

- C5-CTW-23, C5-ICS-23, C6-BCS-23, C5-OSC-23, C5-CSE-23, C5-FIS-23

Semester 2

- C6-COA-23, C6-TCS-23, C6-CNW-23, C6-PLC-23, C6-RL1-23, C6-BMA-23

Semester 3

- C6-SPI-23, C6-NFV-23, C6-ISS-23, C7-SWL-23, C7-DFM-23, C7-PSM-23

Semester 4

- C7-AIC-23, C7-MRI-23, C7-ISC-23, C7-PMA-23, C7-WMS-23, C7-IKM-230

Semester 5

- C7-CWP-23, C7-CSM-23, C7-CAP-23, C7-LCS-23, C7-CME-23, C7-EHK-23

Semester 6

- C7-RME-23, C7-CPT-23, C7-IRI-23, C7-WPB-23, C7-ISM-23, C7-INM-23 **Select one** (C7-ORB-23, C7-SMA-23, C7-PRC-23)

Semester 7

- C7-RCP-23, C7-CEM-23, C7-ENT-23, C7-RL2-23 **Select one** (C8-CCJ-23, C8-FAC-23, C8-FIM-23)

Semester 8

- C7-IAT-23, C7-DIS-23

Admissions Criteria

1) Certificate IV (NCQF level 4) with 6 subjects and passes in English, Mathematics and Science subject or equivalent..

2) Applicants who do not meet the above criteria but possess relevant industry experience may be considered through Recognition of Prior Learning (RPL) and Credit Accumulation and Transfer (CAT) policies for access. This consideration will be done following guidelines of the ETP which are aligned with BQA/ National policies.

3) Recognition of Prior Learning (RPL) and CATS will also be provided for, and candidates will have to meet the necessary criteria set by individual ETPs in accordance with the BQA respective policies and regulations for RPL and CATS.

4) For enquiries and more information please visit our website:
www.bothouniversity.com

Bachelor of Science in Network Security and Computer Forensics

Programme details:

The curriculum consists of essential core modules and elective modules that are optional. Specific modules may require prerequisites, requiring students to successfully complete another module or set of modules before registering. Additionally, certain modules may be designated as co-requisite, meaning they must be taken concurrently. The credit load of each module is indicated by the number in parentheses at the end. Each credit is equivalent to approximately 10 hours of combined guided, in-class, and independent learning. Hence, a module with 10 credits generally involves around 100 hours of study.

Core modules:

- C5-CE1-20: Computer and its Essential 1 (10)
- C5-PLD-20: Programming Logic and Design (10)
- C5-MAT-20 : Mathematics (10)
- C5-OSH-11: Operating Systems and Hardware (20)
- C6-PIE-20 : Professional Issues and Ethics (10)
- C6-NEF-20 : Networking Fundamentals (20)
- C6-DBC-20 : Database Concepts (10)
- D6-AWS-20 : Academic Writing for STEM (10)

- C6-CE2-20 : Computer and its Essentials 2 (10)
- C6-EOL-20 : Essentials of Linux (10)
- C6-CFO-23 : Computer Forensics (10)
- C6-IPC-11 : Introduction to Programming Using C++ (20)
- C6-CFL-23 : (Computer Forensics Lab (10)
- C6-RSW-20 : Routing and switching (10)
- C6-RSL-20 : Routing and Switching Lab (10)
- C7-SCS-23 : Scripting for Cyber Security (20)
- C6-PCS-23 : Principles of Cyber Security (10)
- C6-OSF-23 : Operating System Forensics (10)
- C6-NSE-20 : Network Security (10)
- C6-WMS-23 : Wireless and Mobile Security (10)
- C7-IDS-23 : Information and Data Security (10)
- C7-EHK-13 : Ethical Hacking (20)
- C7-SDN-20 : Software Defined Network Engineering (10)
- C7-FIT-23 : Forensics Investigation Techniques (10)
- C7-CGT-23 : Cryptographic Techniques (10)
- C7-RMS-20 : Research Methods for STEM (10)
- C7-MAN-13 : Malware Analysis (20)
- C7-AEH-23 : Advanced Ethical Hacking (10)
- C7-MFO-20 : Mobile Forensics (10)
- C8-CCI-23 : Cyber Crime Investigation (10)
- C7-RP1-20 : Research Project 1: Proposal Writing (10)
- C7-CYL-23 : Cyber Law (10)
- B8-ENI-20 : Entrepreneurship and Innovation (20)
- C8-RP2-20 : Research Project 2: Dissertation (20)
- C7-PPC-20 : Professional Practice in Computing (40)

Elective Modules:

- C7-IOT-23 : Internet of Things (10)

- C7-CCS-20 : Cloud Computing and Security (10)
- C7-SDE-20 : Security by Design (10)
- C8-MAS-20 : Media and Storage (10)
- C8-MEF-23 : Media Forensics (10)
- C8-ISG-23 : Information Security Management and Governance (10)

Recommended full-time study path - 4 Years.

Semester 1

- C5-CE1-20, C5-PLD-20, C5-MAT-20, C5-OSH-11, C6-PIE-20

Semester 2

- C6-NEF-20, C6-DBC-20, D6-AWS-20, C6-CE2-20, C6-EOL-20

Semester 3

- C6-CFO-23, C6-IPC-11, C6-CFL-23, C6-RSW-20, C6-RSL-20

Semester 4

- C7-SCS-23, C6-PCS-23, C6-OSF-23, C6-NSE-20, C6-WMS-23

Semester 5

- C7-IDS-23, C7-EHK-13, C7-SDN-20, C7-FIT-23, C7-CGT-23

Semester 6

- C7-RMS-20, C7-MAN-13, C7-AEH-23, C7-MFO-20, (**Select one** C7-IOT-23, C7-CCS-20, C7-SDE-20)

Semester 7

- C8-CCI-23, C7-RP1-20, C7-CYL-23, B8-ENI-20, (**Select one** C8-MAS-20, C8-MEF-23, C8-ISG-23)

Semester 8

- C8-RP2-20, C7-PPC-20

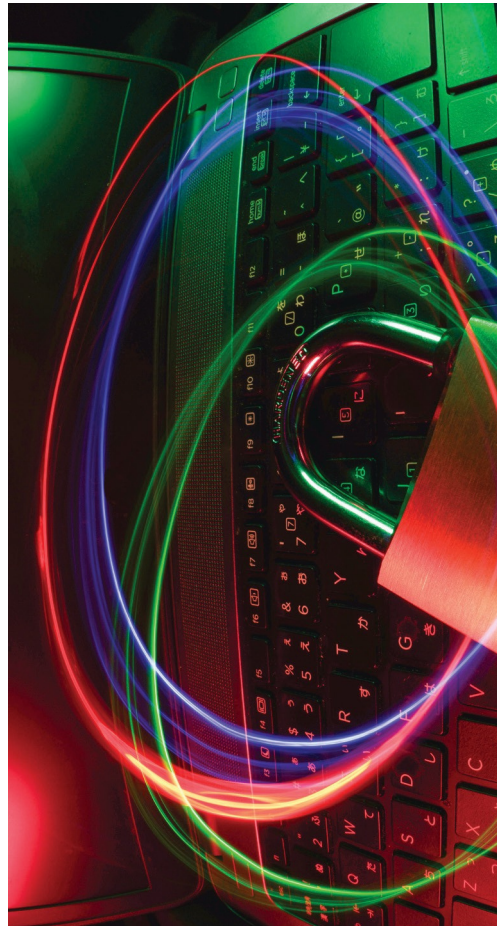
Admissions Criteria

1) Applicants are expected to have successfully completed secondary schooling. The typical entry requirement is BGCSE or IGCSE (in Botswana), LGCSE (in Lesotho) or other equivalent secondary school qualification.

2) BGCSE/equivalent with minimum Pass (D) in 5 subjects including English and Mathematics.

3) Diploma or equivalent qualification in a related field.

4) Applicants that do not meet the above criteria but possess relevant industry experience will be considered through recognition of prior learning (RPL).



Master of Education in Higher Education

Programme details:

The programme consists of 9 core (required) modules and 3 elective modules. Some modules may have pre-requisites (i.e. may require the student to pass another module or set of modules first). Some modules may be co-requisite (i.e. such modules are required to be taken together). The number at the end of the module in parenthesis indicates the credit load of the module. 1 credit is equal to 10 hours of learning (guided, in-class and independent combined); therefore a 10-credit module requires an average 100 hours of learning from the student.

Core modules:

- D8 - LTA - 20: Learning, Teaching and Assessment (20)
- D8 - PPA1 - 14: Professional Academic Practice in Action 1 (10)
- D8 - QHE - 11: Quality Frameworks in Higher Education (20)
- D8 - ETE - 12: Educational Technology and e-Learning (20)
- D8 - RHE - 14: Research in Higher Education (20)
- D8 - CDD - 14: Curriculum Design and Development (20)
- D8 - PPA2 - 14: Professional Academic Practice in Action 2 (10)
- D9 - CHE - 14: Contemporary Issues in Higher Education (20)
- D9 - GMH - 14: Governance and Management in Higher Education (20)
- D9-REP-21 : Research Proposal
- D9-DIS-21: Dissertation (40)

Elective Modules:

- D9-OBE-14: Organisational Behaviour (20)
- D9 - PTH - 14: Principles and Techniques of Counselling in Higher Education (20)
- D9 - GHE - 14: Globalisation and Higher Education (20)

Recommended full-time study path: 2 Years

Semester 1

- D8:LTA - 10, D8 - PPA1 - 14, D8 - ETE - 12

Semester 2

- D8 - QHE - 11, D8 - RHE - 14, D8 - CDD - 14, G8 - PPA2 - 15

Semester 3

- D9-REP-21 ; D9-CHE-14; D9-GMH-14

Semester 4

- D9-DIS-21 **Select one** (D9-OBE-14, D9-PTH-14, D9-GHE-14)

Admissions Criteria

1) Applicants are expected to have completed a Bachelors Degree, preferably up to Honors level from a recognised institution.

2) For enquiries and more information please visit our website: www.bothouniversity.com

*Please note that this programme is a teaching qualification which prepares learners to become qualified and professional teachers therefore , all students in this programme must do their practical teaching (Teaching Practice /PPA2 module)in order to graduate .

Master of Education in Curriculum Design and Instruction

Programme details:

The programme is made up of eleven core modules and six elective modules. Prospective students are expected to choose two elective modules from the six elective modules, while all core modules are compulsory for all students. Students must complete 240 credits before graduating from the programme, 210 credits cover the compulsory modules, while 30 credits cover the elective components. The credit loads are indicated against each module. One credit represents 10 notional hours. The research methodology module is a prerequisite for the dissertation module. Learners are expected to pass research methods before being registered for the dissertation module. MEDCI programme is a two –year programme and will be delivered through Distance and Blended Learning modes. The programme can be studied by both national and international candidates.

Core modules:

- D9-LTA-14: Learning, Teaching and Assessment (20)
- D9-TCD-22: Theories of Curriculum Development (10)
- D9-CAE-22: Computer Applications in Education (10)
- D9-FCD-22: Foundations of Curriculum Design and Development (20)
- D9-ISI-22: Instructional Strategies Using Internet (10)
- D9-CDD-14: Curriculum Design and Development (20)
- D9-CEV-22: Curriculum Evaluation (20)
- D9-DME-22: Designing and Maintaining E-Learning (10)
- D9-REM-22: Research Methods (20)
- D9-ABE-22: Assessment and Moderation in Outcomes-based Education (10)
- D9-DIS-14: Dissertation (60)

Elective Modules:

- D9-LTH-22: Learning Theories (10)
- D9-CED-22: Comparative Education (10)
- D9-VLI-22: Virtual Learning in Instruction (10)
- D9-CCD-22: Contemporary Issues in Curriculum Development (20)
- D9-QHE-22: Quality Frameworks in Higher Education (20)
- D9-CUA-22: Curriculum Analysis (20)

Semester 1

- D9-LTA-14; D9-TCD-22; D9-CAE-22; D9-FCD-22

Semester 2

- D9-ISI-22; D9-CDD-14; D9-CEV-22 **Select one** (D9-LTH-22; D9-CED-22; D9-VLI-22)

Semester 3

- D9-DME-22; D9-REM-22; D9-ABE-22 **Select one** (D9-CCD-22; D9-QHE-22; D9-CUA-22)

Semester 4

- D9-DIS-14

Admissions Criteria

- 1) Any recognised Bachelor's Degree (NCQF Level 7)
- 2) A Post –Graduate Diploma (NCQF Level 8) in the same or a cognate field of study.



Master of Education in Educational Leadership and Management

Programme details:

The Master of Educational Leadership and Management programme focuses on training and preparing learners for a range of high level careers that require educational leadership and management skills, competencies and knowledge needed by the learners to become the professionals that they aspire to be. The programme is made up of twelve core modules and three elective modules. Students must complete 240 credits before graduating from the programme; 204 credits encompass the compulsory modules, while 36 credits encompass the elective components. The credit loads are indicated against each module. One credit represents 10 notional hours.

Core modules:

- D9-ELC-23: Educational Leadership and Curriculum Development (10)
- D9-AET-23: Advanced Educational Technology (10)
- D9-SME-23: Strategic Management in Education (10)
- D9-EPL-23: Education Policy and Law (10)
- D9-EDR-23: Educational Research (12)
- D9-ASI-23: School Administration, Supervision and Instruction (12)
- D9-ECF-23: Educational Costs and Financial Analysis (12)
- D9-HRA-23: Human Resources Administration in Education (12)
- D9-RPL-23: Research Proposal (36)
- D9-ESC-23: Education, Society and Community Relations (12)
- D9-QME-23: Quality Management in Education (12)
- D9-DIS-23: Dissertation (80)

Elective Modules:

- D9-DST-23: Decision Making in Secondary and Tertiary Institutions (12)
- D9-ERC-23: Education Reforms and Curriculum Development (12)
- D9-LME-23: Leadership and Management in Education (12)

Semester 1

- D9-ELC-23, D9-AET-23, D9-SME-23, D9-EPL-23, D9-EDR-23

Semester 2

- D9-ASI-23, D9-ECF-23, D9-HRA-23, D9-RPL-23

Semester 3

- D9-ESC-23, D9-QME-23 **Select One** (D9-DST-23, D9-ERC-23, D9-LME-23)

Semester 4

- D9-DIS-23

Admissions Criteria

1) Any recognised Bachelor's Degree (NCQF Level 7)

2) A Post –Graduate Diploma (NCQF Level 8) in the same or a cognate field of study

3) For enquiries and more information please visit our website www.bothouniversity.com

Post Graduate Diploma in Higher Education

Programme details:

This programme facilitates the professional development of teachers and lecturers as professionals in the field of education. The programme is needed by academics and teachers who are specialists in their different disciplines but do not possess any teaching qualifications. The programme offers participants the professional skills and competences required to facilitate, manage and assess students' learning effectively. Through this programme, student teachers would have a unique opportunity of enhancing their teaching practice in terms of adopting a more scholarly and contemporary approach towards their teaching and students' learning. The programme consists of 6 core (required) modules. Some modules may have pre-requisites (i.e. may require the student to pass another module or set of modules first). Some modules may be co-requisite (i.e. such modules are required to be taken together). The number at the end of the module in parenthesis indicates the credit load of the module. 1 credit is equal to 10 hours of learning (guided, in-class and independent combined); therefore a 10-credit module requires on average 100 hours of learning from the student.

Core modules:

- D8 - LTA - 10: Learning, Teaching and Assessment (20)
- D8 - PPA1 - 15: Professional Academic Practice in Action 1 (10)
- D8 - QHE - 11: Quality Frameworks in Higher Education (20)
- D8 - ETE - 12: Educational Technology and e-Learning (20)
- D8 - RHE - 14: Research in Higher Education (20)
- D8 - CDD - 14: Curriculum Design and Development (20)
- D8 - PPA2 - 15: Professional Academic Practice in Action 2 (10)

Recommended full-time study path (1 Year):

Semester 1

- D8:LTA - 10, G8 - PPA1 - 15, G8 - ETE - 12

Semester 2

- D8 - QHE - 11, G8 - RHE - 14, G8 - CDD - 14
- D8 - PPA2 - 15 (10)

Admissions Criteria

1) Applicants are expected to have completed a Bachelors Degree, preferably up to Honors level from a recognised institution.

2) For enquiries and more information please visit our website: www.bothouniversity.com

*Please note that this programme is a teaching qualification which prepares learners to become qualified and professional teachers therefore , all students in this programme must do their practical teaching (Teaching Practice / PPA2 module) in order to graduate .

Post Graduate Diploma in Educational Technology

Programme details:

The postgraduate diploma in educational technology programme aims at training the 21st century teachers to integrate emerging technologies and tools into their classroom teaching and learning processes. The programme is made up of eight core modules which prospective students are expected to complete in two semesters. All the core modules are compulsory for all students. Students must complete 120 credits before graduating from the programme. The credit loads are indicated against each module. One credit represents 10 notional hours. All the first semester modules are pre-requisites for the second semester modules. Learners are expected to pass all the modules in the first semester before proceeding to the second semester.

Core modules:

- D9-FET-23: Foundations of Educational Technology (20)
- D7-ITI-23: Integrating Technology into Instructional Design (10)
- D8-OTL-23: Online Teaching and Learning (10)
- D8-RET-23: Research Methods in Educational Technology (20)
- D8-TSN-23: Technology in Special Needs Education (10)
- D8-ITC-23: Integrating technology into Curriculum (20)
- D8-EMT-23: Emerging Technologies in Education (10)
- D8-RPO-23: Research Project (20)

Recommended full-time study path (1 Year):

Semester 1

- D9-FET-23, D7-ITI-23, D8-OTL-23, D8-RET-23

Semester 2

- D8-TSN-23, D8-ITC-23, D8-EMT-23, D8-RPO-23

Admissions Criteria

Entry to this qualification will be through the following:

- 1)** Any recognised Bachelor's Degree (NCQF Level 7) from any area of academic discipline of study.
- 2)** For enquiries and more information please visit our website: www.bothouniversity.com

Bachelor of Science in Health Information Management

Programme details:

The program comprises mandatory core modules and optional elective modules. Certain modules may have prerequisites, meaning students must pass another module or set of modules before enrolling. Additionally, some modules may be co-requisite, necessitating that they be taken simultaneously. The number in parentheses at the end of each module denotes its credit load. One credit corresponds to 10 hours of combined guided, in-class, and independent learning. Therefore, a 10-credit module typically entails around 100 hours.

Core modules:

- C5-CE1-20: Computer and its Essential 1 (10)
- D6-LHP-23: Law & HIM Practice (10)
- D6-IAP-21: Introduction to Anatomy & Physiology (20)
- B5-BM1-20: Business Management 1 (10)
- D6-HET-21: Health Ethics (10)
- C6-CE2-20: Computer and its Essential 2 (10)
- B6-BM2-20: Business Management 2 (10)
- D6-IPP-21: Introduction to Pathology & Pharmacology (20)
- B5-PMK-20: Principles of Marketing (10)
- D6-AWS-20: Academic writing for STEM (10)
- D6-IMT-21: Introduction to Medical Terminology (20)
- D5-BLS-21: Basic Life support & Emergency care (10)
- D5-IEH-21: Introduction to E-Health (10)
- B6-OPM-20: Operations Management (10)
- D5-MDB-21: Medical Database 1 (10)
- D5-IGH-23: Introduction to Global Health (10)
- D6-EPI-13: Epidemiology (20)
- D6-ITR-21: Introduction to Medical Transcription (10)
- D5-CHA-21: Computing in Health Administration (10)
- D7-BIO-23: Biostatistics (20)
- B6-PTM-21: Procurement & Tender Management (10)
- D7-DMI-23: Data Management & Information Governance (20)
- D6-PCM-23: Principles of Community Health (10)
- D7-HIS-21: Health Information Systems (20)
- D6-FHI-23: Fundamentals of Health Insurance (10)
- D7-DCO-13: Disease Coding (20)

- D7-RME-23: Research Methods (10)
- D7-HIR-21: Health Information Risk Management (10)
- B8-ENI-20: Entrepreneurship & Innovation (20)
- D7-RPP-23: Research Project Proposal (10)
- D7-PPR-21: Professional Practice in HIM (40)
- D7-RPO-23: Research Project (20)

Elective Modules:

- A5-IFA-20: Introduction to Financial Accounting (10)
- B6-FFM-20: Fundamental of Financial Management (10)
- D7-HEC-23: Health Economics (10)
- B7-PRM-20: Project Management (10)
- B7-HRM-20: Human Resource Management (10)

Recommended full-time study path (4 years)

Semester 1

- C5-CE1-20, D6-LHP-23, D6-IAP-21, B5-BM1-20, D6-AWS-20

Semester 2

- C6-CE2-20, B6-BM2-20, D6-IPP-21, B5-PMK-20, D6-HET-21

Semester 3

- D6-IMT-21, D5-BLS-21, D5-IEH-21, B6-OPM-20, D5-MDB-21

Semester 4

- D5-IGH-23, D6-EPI-13, D6-ITR-21, D5-CHA-21, **Select one** (A5-IFA-20, B6-FFM-20)

Semester 5

- D7-BIO-23, B6-PTM-21, D7-DMI-23, D6-PCM-23

Semester 6

- D7-HIS-21, D6-FHI-23, D7-DCO-13, D7-RME-23

Semester 7

- D7-HIR-21, B8-ENI-20, D7-RPP-23, **Select two** (D7-HEC-23 or B7-PRM-20 or B7-HRM-20)

Semester 8

- D7-PPR-21, D7-RPO-23

Admissions Criteria

1) The typical entry requirement is BGCSE or other equivalent secondary school qualification with a minimum grade of 'D' in five subjects. In addition, applicants must have 10 points in English and Mathematics combined or 32 points in the top 5 subjects.

2) Certificate holders may be granted exemptions based on the relevance of the subjects.

3) Diploma or equivalent qualification in a related field.

4) Applicants that do not meet the above criteria but possess relevant industry experience will be considered through recognition of prior learning (RPL).

Bachelor of Science in Safety, Health and Environmental Management

Programme details:

The program comprises mandatory core modules and optional elective modules. Certain modules may have prerequisites, meaning students must pass another module or set of modules before enrolling. Additionally, some modules may be co-requisite, necessitating that they be taken simultaneously. The number in parentheses at the end of each module denotes its credit load. One credit corresponds to 10 hours of combined guided, in-class, and independent learning. Therefore, a 10-credit module typically entails around 100 hours. Candidates must acquire a minimum of 504 credits modules to be awarded with a Bachelor of Science Degree in Safety, Health and Environmental Management.

Core modules:

- D5-IEM-23: Introduction to Environmental Management (12)
- D5-CIS-23: Computing and Information Skills (12)
- D5-AWB-20: Academic Writing for Business (10)
- D5-MSH-23: Mathematics for OSH (12)
- D5-AIS-23: Advanced Integrated Science (12)

- D6-QUM-21: Quality Management (12)
- D6-OHS-21: Introduction to Occupational Health and Safety Management (12)
- D6-RSM-21: Risk Management (12)
- D6-OHL-21: Occupational Health and Safety Law I (12)
- D6-HIF-23: Health Informatics (12)
- D6-HIV-23: HIV and AIDS Management (12)
- D6-EPI-23: Epidemiology (12)
- D6-ERG-23: Ergonomics (12)
- D7-BST-21: Biostatistics (12)
- D6-EPM-21: Emergency Preparedness and Disaster Management (12)
- D7-ORB-23: Organizational Behavior (12)
- D7-OS2-21: Occupational Health and Safety Law II (12)
- D7-FTX-23: Fundamentals of Toxicology (12)
- D7-FMN-23: Fire Management (12)
- D7-EIA-23: Environmental Impact Assessment (12)
- D7-API-23: Accident Prevention and Investigations (12)
- D7-PCC-23: Principles of Climate Change (12)
- D7-GHD-23: Global Health Dynamics (12)
- D7-WMN-23: Waste Management (12)
- D7-OSM-23: Occupational Safety Management (12)
- D7-RSM-23: Research Methods (12)
- D7-SMN-23: Security Management (12)
- D7-PIH-23: Principles of Industrial Hygiene (12)
- D7-FAP-23: First Aid Principles and Procedures (12)
- D7-PCO-23: Principles of counselling (10)
- B8-ENI-20: Entrepreneurship & Innovation (20)
- D7-RP1-23: Research project 1 in OHS (Proposal writing) (12)
- D7-MOR-23: Managing occupational records (12)
- D8-SEN-23: Sustainable Environment 12
- D7-RP2-23: Research Project 2 (Dissertation) (20)
- D7-PRP-21: Professional Practice (40)

Elective Modules:

- D7-HST-21: Health and Safety in Transport (12)
- D7-BDM-21: Building Maintenance (12)
- D7-ERT-21: Employee Relations (12)
- D8-FSH-23: Food Safety and Hygiene (12)
- D8-MNS-23: Mining Safety (12)

Recommended Full-Time Study Path – 4 Years Semester 1:

- D5-IEM-23, D5-CIS-23, D5-AWB-20, D5-MSH-23, D5-AIS-23

FACULTY OF HEALTH AND EDUCATION

(Continued)

Semester 2

- D6-QUM-21, D6-OHS-21, D6-RSM-21, D6-OHL-21, D6-HIF-23

Semester 3

- D6-HIV-23, D6-EPI-23, D6-ERG-23, D7-BST-21, D6-EPM-21

Semester 4

- D7-ORB-23, D7-OSL2-21, D7-FTX-23, D7-FMN-23, D7-EIA-23

Semester 5

- D7-API-23, D7-PCC-23, D7-GHD-23, D7-WMN-23, D7-OSM-23

Semester 6

- D7-RSM-23, D7-SMN-23, D7-PIH-23, D7-FAP-23, D7-PCO-23, **Select two** (D7-HST-21 or D7-BDM-21 or D7-ERT-21)

Semester 7

- B8-ENI-20, D7-RP1-23, D7-MOR-23, D8-SEN-23, **Select one** (D8-FSH-23 or D8-MNS-23)

Semester 8

- D7-RP2-23, D7-PRP-21

Admissions Criteria

1. Candidates must have NCQF Level 4, Certificate IV (BGCSE) or its equivalent) with at least grade C in English, Science and Mathematics or Statistics.

2. 1.A Diploma in Occupational Health and Safety Management (NCQF Level 6) or its equivalent can be admitted with condition that they fulfill all pre-requisite courses for progression to degree level.

Or

3. 1.Special Entry: Candidates who do not meet the minimum academic qualifications stated above but have a minimum of two years relevant work experience will be considered through a Recognition of Prior Learning (RPL) process. Such entry may be accepted on their own merits from students with relevant work experience as acceptable to the institution.

Or

4. 1.Exemptions: Potential students may be exempted from taking specific and selected courses as approved by the relevant structures or as per institutional regulations.

Bachelor of Science in Health Informatics

Programme details:

The programme consists of core (required) and elective modules. Some modules may have prerequisites (i.e. may require the students to pass another module or set of modules first). The number at the end of the module in parenthesis indicates the credit load of the module. One credit is equal to 10 hours of learning (guided in class and independent combined); therefore 10-credit module requires on average 100 hours of learning from the students.

Core modules:

- D5-CA1-23: Computer Applications 1 (10) D5-CAW-23: Communication & Academic writing (10)
- D5-FHI-23: Fundamentals of Health Informatics (10)
- D5-OMN-23: Organizational Management (10) C5-DMA-19: Discrete Mathematics (10)
- D6-DSH-23: Data Science in Healthcare(12) D6-CA2-23: Computer Applications 2 (12) D6-LEH-23: Legal & Ethical Aspects of Healthcare (12)
- D6-PME-23: Health Planning, Monitoring & Evaluation (12)
- D6-IAP-23: Introduction to Anatomy and Physiology (12)
- D6-MTD-23: Medical Terminology and Disease coding (12)
- D6-IPP-23: Introduction to Pathology and Pharmacology (12)
- D6-IDS-23: Information & Data Security (12) D6-PRM-23: Project Management (12)
- B7-EIH-23: Entrepreneurship & Innovation in Health Informatics (12)
- D6-IPR-23: Introduction to Programming (12) D7-BIS-23: Biostatistics (16)
- D7-DSH-23: Decision Support Systems in Healthcare (16)
- D7-ITE-23: Introduction to Telemedicine (16) D6-RMH-23: Research Methods in Health Information (12)
- D7-HIS-23: Health Information Systems (16) D7-FHK-23: Fundamentals of Health Knowledge Management (16)
- D7-PEP-23: Principles of Epidemiology (16) D7-WPP-23: Work-integrated Learning/ Professional Practice (60)
- D7-MED-23: Medical Databases (16)

*The programmes offered in this document are accredited by BQA and offered at Botho University at the time of print. Please refer to your offer letter from the admissions department for any changes in programme name or duration that may occur due to regulatory requirements.

- D7-IPH-23: Introduction to Public Health (16)
- D6-RKM-23: Records Keeping Management (16)
- D7-MET-23: Medical Transcription (16)
- D7-CIP-23: Contemporary Issues Public Health(16)
- D8-PRO-23: Research Project (40)
- D7-STM-23: Strategic Management (16)
- D7-EMR-23: Introduction to Electronic Medical Records (16)

Elective Modules:

- D7-MET-22: Medical Transcription (16)
- D7-CIP-22: Contemporary Issues Public Health(16)
- D7-SMA-22: Strategic Management (16)
- D7-EMR-22: Introduction to Electronic Medical Records (16)

Recommended Full-Time Study Path – 4 Years

Semester 1

- D5-CA1-23, D5-CAW-23, D5-FHI-23, D5-OMN-23, D5-IDH-23, C5-DMA-19

Semester 2

- D6-DSH-23, D6-CA2-23, D6-LEH-23, D6-PME-23, D6-IAP-23

Semester 3

- D6-MTD-23, D6-IPP-23, D6-IDS-23, D6-PRM-23, B7-EIH-23

Semester 4

- D6-IPR-23, D7-BIS-23, D7-DSH-23, D7-ITE-23

Semester 5

- D6-RMH-23, D7-HIS-23, D7-FHK-23, D7-PEP-23

Semester 6

- D7-WPP-23

Semester 7

- D7-MED-23, D7-IPH-23, D6-RKM-23, **Select one** (D7-MET-23, D7-CIP-23)

Semester 8

- D8-PRO-23, **Select one** (D7-STM-23 or D7-EMR-23)

Admissions Criteria:

1. Candidates must have NCQF Level 4, Certificate IV (BGCSE) or its equivalent) with at least grade C in English, Science and Mathematics or Statistics.

OR

2. A Diploma in Health Informatics (NCQF Level 6) or its equivalent can be admitted with condition that they fulfil all prerequisite courses for progression to degree level.

OR

3. Special Entry: Candidates who do not meet the minimum academic qualifications stated above but have a minimum of two years relevant work experience will be considered through a Recognition of Prior Learning (RPL) process. Such entry may be accepted on their own merits from students with relevant work experience as acceptable to the institution.

OR

4. Exemptions Potential students may be exempted from taking specific and selected courses as approved by the relevant structures or as per institutional regulations.

Bachelor of Science in Hospital Administration

Programme Details:

The program comprises mandatory core modules and optional elective modules. Certain modules may have prerequisites, meaning students must pass another module or set of modules before enrolling. Additionally, some modules may be co-requisite, necessitating that they be taken simultaneously. The number in parentheses at the end of each module denotes its credit load. One credit corresponds to 10 hours of combined guided, in-class, and independent learning. Therefore, a 10-credit module typically entails around 100 hours.

Core Modules:

- D5-CA1-23 Computer Applications 1 (10)
- D6-IAP-21 Introduction to Anatomy & Physiology (20)
- D6-AWS-20 Academic writing for STEM (10)
- D6-POM-23 Principles of Management (10)
- D6-PHA-23 Principles of Hospital Administration (10)
- A5-FOA-23 Fundamentals of Accounting (10)
- D6-IPP-21 Introduction to Pathology and Pharmacology (20)
- D6-CA2-23 Computer Applications 2 (10)
- D5-IGH-23 Introduction to Global health (10)
- D6-HLP-23 Health Ethics, Law and Policy (10)
- D6-HSM-23 Hospital Services Management Core , Support and Utility (10)
- D6-DMS-23 Health database management system (20)
- D6-EPI-13 Epidemiology (20)
- D6-HEF-23 Health Informatics (10)
- D7-HEC-23 Health Economics (10)
- D6-MRD-23 Medical Records Department (10)
- D7-PCS-23 Patient Care and Safety in Hospitals (10)
- B6-OB-20 Organisational Behaviour (10)
- D7-MMH-23 Material Management in Hospitals (10)
- D7-ELA-23 Ethical and Legal Issues in Administration (10)
- D7-RTH-23 Research Trends in Hospital Administration (10)
- D7-MTE-23 Medical Terminology (20)
- D7-HQM-23 Healthcare Quality Management (10)
- B7-STM-23 Strategic Management (10)
- D6-EHS-23 Environmental Health and Safety (10)
- D6-DMA-23 Disaster Management (10)
- D6-REM-23 Research Methodology (10)
- D7-MST-13 Medical Statistics (20)
- D7-HIP-23 Health Insurance and Policies (10)
- B7-HRM-20 Human Resource Management (10)
- D7-PPD-23 Personal and Professional Development. (10)
- D7-PCH-23 Public and Community Health (10)
- D7-RPR-23 Research Project 1 (10)
- D7-DCC-23 Disease Coding and CPT (20)
- B8-ENI-20. Entrepreneurship and Innovation (20)
- D6-RMN-19 Risk Management (10)
- D7-PPR-22 Professional practice (40)
- D8-RP2-22 Research Project 2 (20)

FACULTY OF HEALTH AND EDUCATION

(Continued)



Elective Modules:

- D6-EHS-23 Environmental Health and Safety (10)
- D6-DMA-23 Disaster Management (10)
- D7-PPD-23 Personal and Professional Development (10)
- D7-PCH-23 Public and Community Health (10)

Recommended Full-Time Study Path – 4 Years

Semester 1

D5-CA1-23, D6-IAP-21, D6-AWS-20, D6-POM-23, D6-PHA-23

Semester 2

A5-FOA-23, D6-IPP-21, D6-CA2-23, D5-IGH-23, D6-HLP-23

Semester 3

D6-HSM-23, D6-DMS-23, D6-EPI-13, D6-HEF-23

Semester 4

D7-HEC-23, D6-MRD-23, D7-PCS-23, B6-OBE-20, D7-MMH-23, D7-ELA-23

Semester 5

D7-RTH-23, D7-MTE-23, D7-HQM-23, B7-STM-23, **Select one** (D6-EHS-23, D6-DMA-23)

Semester 6

D6-REM-23, D7-MST-13, D7-HIP-23, B7-HRM-20, **Select one** (D7-PPD-23, D7-PCH-23)

Semester 7

D7-RPR-23, D7-DCC-23, B8-ENI-20, D6-RMN-19

Semester 8

D7-PPR-22, D8-RP2-22

Admissions Criteria:

1. Candidates must have NCQF Level 4, Certificate IV (BGCSE) or its equivalent) with at least grade C in English, Science and Mathematics or Statistics.

OR

2. A Diploma in Health Informatics (NCQF Level 6) or its equivalent can be admitted with condition that they fulfil all prerequisite courses for progression to degree level.

OR

3. Special Entry: Candidates who do not meet the minimum academic qualifications stated above but have a minimum of two years relevant work experience will be considered through a Recognition of Prior Learning (RPL) process. Such entry may be accepted on their own merits from students with relevant work experience as acceptable to the institution.

OR

4. Exemptions Potential students may be exempted from taking specific and selected courses as approved by the relevant structures or as per institutional regulations.

Diploma in Occupational Health and Safety

Programme details:

The programme consists of core (required) and elective modules. Some modules may have prerequisites (i.e. may require the students to pass another module or set of modules first). The number at the end of the module in parenthesis indicates the credit load of the module. One credit is equal to 10 hours of learning (guided in class and independent combined); therefore 10-credit module requires on average 100 hours of learning from the students.

Core modules:

- D5-CSS-21: Communication and Study Skills (10)
- D5-ICT-21: Information Communication Technology (10)
- D6-OHS-21: Introduction to Occupational Health and Safety Management (12)
- D6-OHT-21: Introduction to Occupational Hygiene and Toxicology (12)
- D6-OHL-21: Occupational Health and Safety Law I (12)
- D6-SMB-21: Safety Management and the Built Environment (12)
- D6-ENM-21: Environmental Management (12)
- D6-RMN-21: Risk Management (12)
- D6-OS2-21: Occupational Health and Safety Law II (12)
- D6-QUM-21: Quality Management (12)
- D7-LBL-21: Labour Law (12)
- D7-BST-21: Biostatistics (12)
- D7-ERG-21: Ergonomics (12)
- D7-EPM-21: Emergency Preparedness and Disaster Management (12)
- D7-OPD-21: Occupational Diseases (12)
- D7-INA-21: Industrial Attachment (60)

Elective Modules:

- D7-ERT-21: Employee Relations (12)
- D7-HST-21: Health and Safety in Transport (12)
- D7-BDM-21: Building maintenance (12)

Recommended Full-Time Study Path (2 years)

Semester 1

- D5-CSS-21, D5-ICT-21, D6-OHS-21, D6-OHT-21, D6-OHL-21

Semester 2

- D6-SMB-21, D6-ENM-21, D6-RMN-21, D6-OS2-21; D6-QUM-21

Semester 3

- D7-LBL-21, D7-BST-21, D7-ERG-21, D7-EPM-21, D7-OPD-21 **Select one** (D7-ERT-21 or D7- HST-21 or D7-BDM-21)

Semester 4

- D7-INA-21

Admissions Criteria

1) Applicants are expected to have successfully completed secondary schooling. The typical entry requirement is BGCSE or IGCSE (in Botswana), LGCSE (in Lesotho) or other equivalent secondary school qualification.

2) BGCSE/equivalent with minimum Pass (D) in 5 subjects including English and Mathematics.

3) Applicants in possession of a Diploma or Higher Diploma in related field may be given exemptions based on the credit point equivalency.

4) For enquiries and more information please visit our website:
www.bothouniversity.com

Bachelor of Commerce in Hospitality Management

Programme details:

The programme consists of core (required) and elective modules. Some modules may have pre-requisites (i.e. may require the student to pass another module or set of modules first). Some modules may be co-requisite (i.e. such modules are required to be taken together). The number at the end of the module in parenthesis indicates the credit load of the module. 1 credit is equal to 10 hours of learning (guided, in-class and independent combined); therefore a 10-credit module requires on average 100 hours of learning from the student.

Core Modules:

- H6-PHT-22: Principles of Hospitality and Tourism Management (10)
- C5-CE1-20: Computers and its Essentials 1 (10)
- D5-AWB-20: Academic Writing for Business (10)
- H5-PC1-22: Profession Cookery 1 (10)
- H5-IHO-17: Introduction to Hotel Operations (10)
- A5-IFA-20: Introduction to Financial Accounting (10) H7-PC2-22: Professional Cookery 2 (15)
- D7-BUC-22: Business communication (15)
- B5-MIE-17: Microeconomics (10)
- H7-PHF-22: Principles of Hospitality Franchise Management (15)
- H5-FRO-17: Front Office Operations (15)
- B6-BMA-22: Business Mathematics (10)
- H7-CS1-22: Culinary Studies & Nutrition 1 (10)
- H7-HKP-22: Housekeeping Management (10)
- H7-CSM-22: Customer service Management (15)
- H6-HHS-22: Hospitality Health and safety (10)
- H5-FSE-14: Food Service Operations (10)
- B7-BST-22: Business statistics (15)
- H7-CS2-22: Culinary Studies and Nutrition 2 (15)
- H7-FBS-22: Food and beverage studies (15)
- H7-THL-22: Tourism and Hospitality law and ethics (15)
- H7-ACM-22: Accommodation Management (15)
- A7-FAC-22: Financial Accounting (15)
- H7-HOS-22: Hospitality Operations and Supply Chain Management (15)
- H7-MHT-22: Marketing for Hospitality and Tourism (15)
- H7-HTI-22: Hospitality and Tourism information Systems (15)
- H7-EVM-22: Events Management (15)
- H8-PR1-22: Project 1 (Research Methods) (15)
- B8-STM-13: Strategic Management (20)

- H7-QSH-22: Quality Systems for the Hospitality Industry (15)
- H7-DTM-22: Destination Management (15)
- D7-FRE-22: French (15)
- H8-PR2-17: Project 2 (Mini Dissertation) (20)
- B8-ENI-20: Entrepreneurship and Innovation (20)

Elective Modules:

- H7-CLT-22: Cultural Tourism (15)
- H7-RCD-22 : Risk, Crisis and Disaster Management (15)
- H7-HTD-22: Hospitality and Tourism Distribution (15)
- H7-EST-22 :Ethics and Sustainability (15)

Semester 1

- H6-PHT-22, C5-CE1-20, D5-AWB-20, H5-PC1-22, H5-IHO-17, A5-IFA-20

Semester 2

- H7-PC2-22, D7-BUC-22, B5-MIE-17, H7-FHT-22, H5-FRO-17

Semester 3

- B6-BMA-22, H7-CS1-22, H7-HKP-22, H7-CSM-22, H6-HHS-22, H5-FSE-14

Semester 4

- B7-BST-22, H7-CS2-22, H7-FBS-22, H7-THL-22, H7-ACM-22

Semester 5

- A7-FAC-22, H7-HOS-22, H7-MHT-22, H7-HTI-22, H7-EVM-22

Semester 6

- H8-PR1-22, B8-STM-13, H7-QSH-22, H7-DTM-22, D7-FRE-22

Semester 7

- H8-PR2-17, B8-ENI-20 **Select one** (H7-CLT-22, H7-RCD-22, H7-HTD-22, H7-EST-22)

Semester 8

- B7-PPB-20

Admissions Criteria

1) Applicants are expected to have successfully completed secondary schooling. The typical entry requirement is BGCSE or IGCSE (in Botswana), LGCSE (in Lesotho) or other equivalent secondary school qualification.

2) BGCSE/equivalent with minimum Pass (D) in 5 subjects including English and Mathematics.

3) Applicants in possession of a Diploma or Higher Diploma in related field may be given exemptions based on the credit point equivalency.

4) For enquiries and more information please visit our website: www.bothouniversity.com

GENERAL ADMISSIONS INFORMATION



GENERAL CRITERIA

1. Applying to Botho University

Before applying to Botho University, students are encouraged to take time out to familiarise themselves with all the programmes on offer. Applicants must meet all the relevant minimum requirements for the programme of study they wish to study. It is also important for applicants to assess whether the programme they choose interests them and that they want to make a career out of it. Our friendly Admission Team Counsellors will provide information needed about the programmes and assist applicants to make informed choices. Details on programmes are available on our website: www.bothouniversity.com

2. How to calculate points

The admission point system is used to measure your academic achievement based on your school-leaving results. Your school-leaving subject grades or percentages are converted into points as per the table (see Table 1 next page) and based on your qualification. These points are added up to arrive at the number of points you have obtained.

GENERAL ADMISSIONS INFORMATION (Continued)



POINTS	GCE			GCSE				SENIOR CERTIFICATE			IB		ESWATINI	
	A-LEVEL/ HSC	AS	COSC	HIGCSE	IGCSE	BGCSE	LGCSE	NSC	HG	SG	HL	SL	POINTS	SGCSE
12	A										7		8	A*
11	B										6		7	A
10	C	a		1				7	A		5	7	6	B
9	D	b		2				6	B		4	6	5	C
8	E	c	A	3	A*,A	A*,A	A*,A	5	C	A	3	5	4	D
7		d	B		B	B	B	4	D	B	2	4	3	E
6	0/S	e	C	4	C	C	C	3	E	C		3	0	F
5			D		D	D	D	2		D		2	0	G
4			E		E	E	E			E				
0					F	F				F				

3. Important points to remember when applying:

- All students can apply in person or using the online application form available on the website. Please read the “Steps to Apply” document available on the application portal before applying.
- Clear certified copies of all relevant educational certificates.
- Clear certified copies of Omang/passport/identity card.
- Please read the Fee Structure and Policy document available on the website before applying.
- Should you have any doubts on the application process please contact our admissions department for further assistance.

Enrol as an online student for a course at Botho University

**Blended and Distance
Learning**



PROGRAMMES

FACULTY OF BUSINESS AND ACCOUNTING

- » MBA
- » MCom in Human Resource Management
- » MCom Banking
- » BBA in Business Management
- » BCom in Risk Management
- » BCom in Accounting
- » BCom in Finance
- » BCom in Investment and Banking
- » BCom in Digital Marketing ***New**

FACULTY OF ENGINEERING AND TECHNOLOGY

- » MSc in Information Systems Management
- » BSc in Data Science ***New**
- » BSc (Honours) in Computing
- » BSc (Honours) in Network Security and Computer Forensics

FACULTY OF HEALTH AND EDUCATION

- » MEd in Curriculum Design and Instruction
- » MEd in Higher Education
- » MEd Educational Leadership and Management
- » BSc in Health Information Management
- » BEd (Hons) in Primary Education
- » Post Graduate Diploma in Higher Education
- » Post Graduate Diploma in Educational Technology
- » Diploma in Occupational Health and Safety

FACULTY OF HOSPITALITY AND SUSTAINABLE TOURISM

- » Diploma in Travel Operations
- » Diploma in Cultural Tourism

GET IN TOUCH

Tel: +267 363 5477

Email: DL@bothouniversity.ac.bw

The above programmes are updated on the date of printing this document, for latest updates visit our website.



**6
intakes in
a year**



**ONLINE
LEARNING**



INTERNATIONAL STUDENTS



Botho University aspires to be the regional hub of academic excellence. In this regard the University has started attracting students beyond Botswana borders from countries such as Zimbabwe, Zambia, Lesotho, Swaziland, Liberia, Namibia etc. International students bring diversity to the student community at Botho University as well as allow for cross-cultural enrichment. At Botho University, the Student Affairs and Alumni Department (SAAD) is dedicated to International students' welfare. The department is also responsible for assisting international students with application for study permits and accommodation in liaison with relevant departments.

How to apply?

International students can apply online by visiting the Botho University website (www.bothouniversity.com) or by speaking to an Admissions Department representative. Depending on the programme of study, applicants will have to meet the admission criteria as specified in this prospectus and any pre-requisites required for specific programmes. In case the applicant's country qualifications framework is not catered for in the admissions criteria, please contact the Admissions Department for assistance.

Fee Details

Fee details are provided in the website: www.bothouniversity.com

Please note that, international students fees may vary from the regular fees. Applicants are requested to contact the Admissions Department for fee details relevant to their country and programme of study.

Accommodation

Botho University is committed to providing international students safe, clean and comfortable accommodation. There is 24-hour power and water supply provided at halls of residence. The rooms are provided on a sharing basis with other international students to enable cross-cultural learning. Each apartment is furnished with a table, chair, cupboard and single bed. There is a kitchen, which each occupant of the house is expected to share. The kitchen is furnished with electric stove and connection for basic cooking. There is also a 24-hour security guard to ensure that the occupants feel safe and secure at all times. There is a provision of Wireless Internet (WIFI) connection.

INTERNATIONAL STUDENTS (Continued)



Local Transport

Accommodation for international students is available at central locations so that public transport, such as “combis” (minivan) are easily accessible. The fares are nominal and it is a safe and reliable mode of transport. Another option is taxis which are also very popular but are a bit more expensive. Buses for travelling long distance and to remote villages are also available. For international students, the Student Affairs and Alumni Department (SAAD) assists with all information in this regard including route maps, fares etc.

On Arrival in Botswana

On arrival in Botswana, an officer from the Student Affairs and Alumni Department (SAAD) welcomes all international students. The Office along with the Office of Campus and Student Housing Management will ensure that international students settle in easily and quickly. It is the department’s responsibility that all international students feel at home and can fully concentrate on their studies.

Find out more about how you as an international student can study at Botho University

Contact:
Student Affairs and Alumni Department (SAAD)

Email:
careerservices@bothouniversity.ac.bw



State-of-the-art Buildings



Educational Facilities



Lecture Theatre

www.bothouniversity.com | BOS ISO 9001:2015 Certified Organisation

EMPLOYABILITY AND OUR GRADUATES



Botho University offers quality support services and programmes that advance student access to learning, welfare, wellness and talent development through Student and Alumni Affairs Department (SAAD).



Services offered by the various units of the department include:

Career and Counselling Services

The unit is available to provide students with psycho-social support, career counselling and academic advising, to further students' personal and professional development.

Special Needs Support

The Special Needs Unit is responsible for managing the welfare of students with special learning needs. The services provided include but are not limited to:

- Accommodation
- Classroom support
- Resource Lab/Centre
- Individual Education Plan (IEP)
- Extra time

Internships and Placement

The Placement and Internship Unit deals with connecting students with appropriate internship opportunities and assisting graduates in seeking meaningful engagements.

Alumni Relations

The Alumni Relations Unit aims to foster a lifelong relationship between the university and its graduates. Its intention is to build strong

networks with graduates, geared towards lifelong learning for alumni. Services rendered by this unit include:

- Career Development Support
- Lifelong learning
- Opportunity to mentor university students
- Alumni Community Impact Programmes
- Stay connected facility
- Career Fairs

Health and Wellness

The unit manages the health and wellness of students and staff. It manages the operations of the University clinic, HIV and AIDS policy, and medical emergency evacuations. Some of the services provided include:

- Assistance with minor illness
 - Referrals to major clinics and hospitals
 - Management of HIV and AIDS interventions and campaigns.
 - Wellness programmes
- Personal Development**



EMPLOYABILITY AND OUR GRADUATES (Continued)

This unit is mandated to teach students life skills. These skills will enable students to cope with tertiary life and life beyond the university. The Personal Development Unit manages and administrates the following:

- Personal Development
- BGP
- One on One Career Sessions
- Development Workshops
- Motivation Sessions
- Entrepreneurship Development
- Leadership Programme

Community Engagement

Botho University is committed to the improvement of people's lives in various communities through skills development, entrepreneurship and community empowerment. This division encourages students to interact with communities in planning and implementing programmes and/or activities aimed at addressing the current demands and situations they are facing. The purpose of this partnership with communities is to improve the lives of people, empower communities to be self-reliant and to develop entrepreneurship skills. The division has an emphasis on instilling the values of volunteerism, Botho, spirit of giving and compassion.

Sports, Culture and Recreation

The unit seeks to contribute to academic performance and personal success by promoting welfare and wellness through talent enhancement and management. This unit has a variety of sporting and non-sporting clubs which seek to contribute to the development of each student in relation to the Botho Graduate Profile.



BOTHO TESTING CENTRE



PROFESSIONAL QUALIFICATION TESTS

Botho testing centre (BTC) is a professional and secure environment providing access to certifications and qualifications that help develop individuals' skills and knowledge. The centre has been operational since 2012 and has branches in Gaborone and Maseru. We offer a wide range of computer based examinations and also provide Proctoring services for various universities, with prior arrangement.

We are an authorized testing centre in partnership with PearsonVue, Prometric Academic and Prometric IT. We offer examinations such as those for TOEFL, GRE, PMI, CIMA, AAT, Cisco,

Microsoft, Oracle, HP, VMware and many other leading global programmes.

Candidates wishing to write an exam can book online with either Prometric or PearsonVue, depending on the vendor for their certifications. Other candidates such as those of AAT, ACCA, CIMA and ICDL exams can schedule for their exams through the assistance of our qualified and friendly staff.

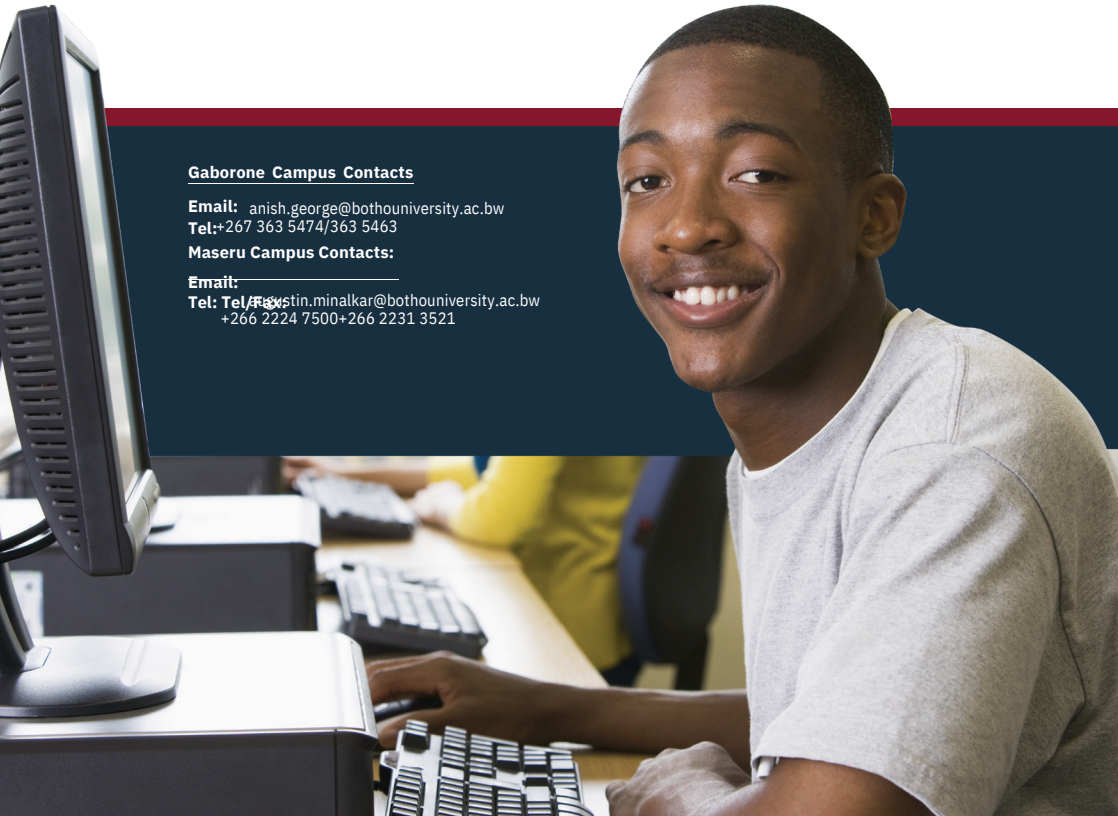


Gaborone Campus Contacts

Email: anish.george@bothouniversity.ac.bw
Tel: +267 363 5474/363 5463

Maseru Campus Contacts:

Email: stefan.minalkar@bothouniversity.ac.bw
Tel: +266 2224 7500+266 2231 3521



QUALITY & ACCOLADES

BQA Registered and Accredited Institution

Registered and Accredited as an Education & Training provider by Botswana Qualifications Authority (BQA)



HRDC Registered Institution

Botho University is registered with the Human Resource Development Advisory Council (HRDC) of Botswana.



BOS ISO 9001:2015 Certified Organisation

We are the only University in Botswana to be BOS ISO 9001:2015 certified - a clear indicator of our passion and commitment to quality. The BOS ISO 9001:2015 certification is considered “hard to obtain and difficult to maintain” by some of its recipients.



Registered Institution in the Kingdom of Lesotho

Registered with Ministry of Education and Training and approved by Council on Higher Education, Kingdom of Lesotho



Registered Institution in the Republic of Namibia

Registered with the National Council for Higher Education in Namibia Accredited by the Namibia Qualifications Authority. (NQA)



Registered Institution in the Kingdom of Eswatini

Botho University has been granted the authority to establish and operate in accordance with section 19 of The Higher Education Act of 2013, by ESHEC



PMR Africa Diamond Arrow Award 2015

Winner of the PMR Africa “Diamond Arrow Award” for excellence under the tertiary institutions category in Botswana as rated by organisations across Botswana.



Rated by African Quality Rating Mechanism (AQRM)

Botho University’s quality at programme level is rated “Good Quality” by the African Quality Rating Mechanism (AQRM), an initiative of the Commission of the African Union (AUC) to establish an African quality assurance system for higher education institutions.



Botho University is a Huawei ICT Academy with a fully equipped laboratory at its Gaborone Campus including training materials for imparting knowledge on various advanced ICT courses offered through the academy.





BOTHO

GRADUATE
PROFILE

ENHANCING YOUR EMPLOYABILITY

The **Botho Graduate Profile (BGP)** is a list of qualities that all Botho University Students are encouraged to learn and imbibe before they graduate.



ARTICULATE

able to communicate information eloquently, effectively and appropriately to a given audience



COLLABORATIVE

considerate of and able to work and communicate effectively with teams of people from different social and cultural backgrounds



CRITICAL-THINKING

having the curiosity and open-mindedness to acquire new knowledge by analysing, reflecting on and evaluating information



DIGITALLY LITERATE

able to identify trustworthy information and use technology creatively and appropriately to solve problems, make decisions, and improve quality of life



ENVIRONMENTALLY RESPONSIBLE

committed to conserving resources and protecting the environment



INNOVATIVE & ENTREPRENEURIAL

able to identify opportunities and take measured risk to develop new and improved ideas, processes and products that create value



KNOWLEDGEABLE & HARDWORKING

understanding a field of study with the expertise, professionalism, motivation and commitment to apply the knowledge gained to solve problems and deliver quality work



POSITIVE & CONFIDENT

being friendly, optimistic, adaptable, and resilient, and able to display healthy self-esteem, especially when interacting with others and making decisions



SOCIALLY RESPONSIBLE

makes decisions and takes actions ethically, with integrity, and with the best interest of society as a whole

Scan for a PDF
copy

GABORONE: Botho Education Park, Kgale, Gaborone, Botswana | Tel: -267 363 5421 / 422 / 446

MASERU: West Wing, Thetsane, Maseru, Lesotho | Tel: -266 22247500

ONGWEDIVA: Mandume Ndemufayo street, Maroela Mall, Ongwediva, Namibia | Tel: -264 652 30227

ESWATINI: Plot No 1206, Riverstone Mall, Manzini, Eswatini | Tel: -268 2505 2288

GHANA: Jungle Ave. Rd., Near A&C Shopping Mall, East Legon-Accra, Ghana | Tel: -233 302 523782

ONLINE LEARNING: DL@bothouniversity.ac.bw | online.bothouniversity.com | Tel: -267 363 5477



BOTSWANA



LESOTHO



ESWATINI



NAMIBIA



GHANA



ONLINE
LEARNING



ISO 9001:2015 CERTIFIED ORGANISATION
www.bothouniversity.com



BOTHO
UNIVERSITY
VIBRANCE • INNOVATION • IMPACT

DigitallyAdvanced
PanAfricanUniversity